

**place | typology | program**

(A)rchitecture as design is the artful play of texture and lightness...

**GROUND**

LIGHT | dynamic force  
CITY PROXIMITY | SITE | dynamic force  
WIND | dynamic force

SIMPLE THOUGHT... essences, the site which is beyond sight.

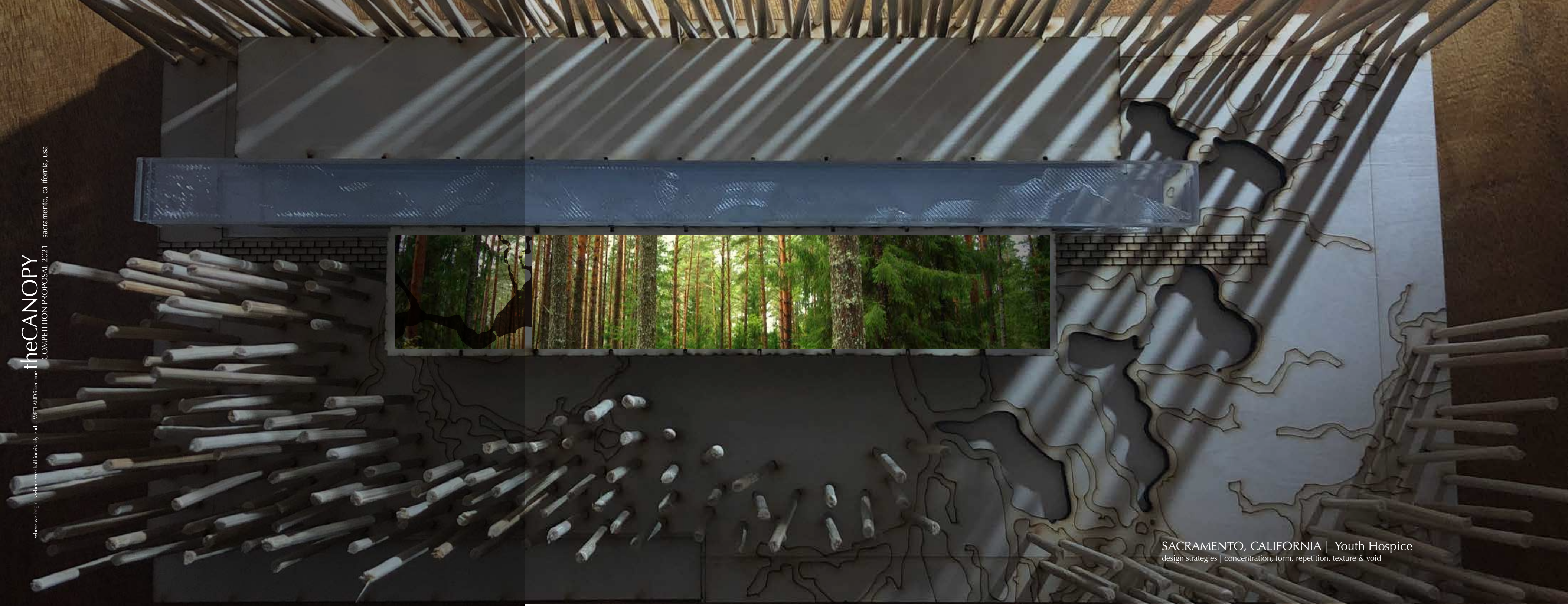
Essences are the inherent set of properties that form ambiances as the essential quality of a designed form within a place...

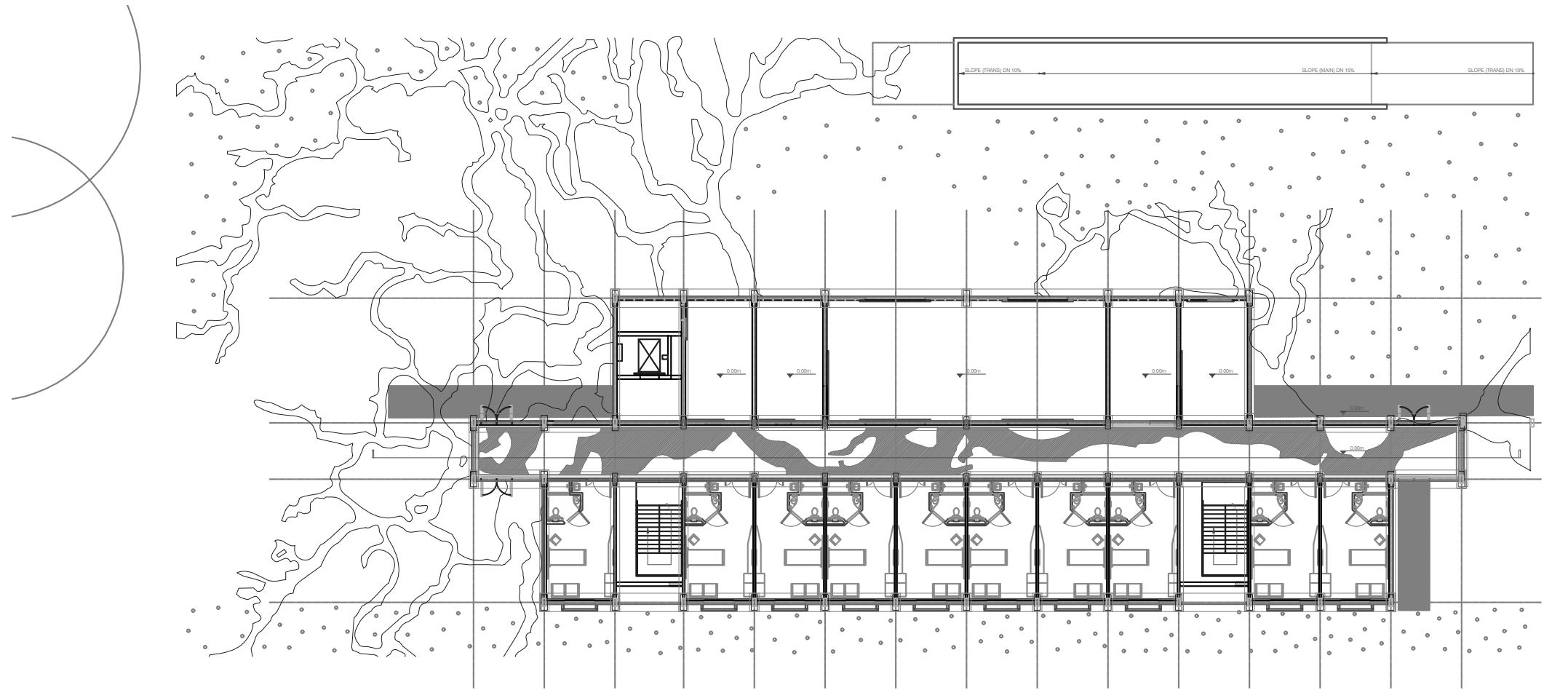
where we begin is where we end...

Ambiance, that which is identified as a feeling grounding a particular place...



grounding...





GROUND PLAN | scale 1:500



SACRAMENTO, CALIFORNIA | Youth Hospice  
design strategies | concentration, form, repetition, texture & void

Surface | **Methodology** | working sample A | Sacramento Youth Hospice

The Essence of Thoughts | **The Assemblage**

Thoughts essential to understanding surfaces as composition of bound essences that evoke a particular ambiance regarding. Each essence (poster) captures a mood (feeling) that is essential to the recognition of ambiance as potential. An essence identifies a particular core property that is essential for a thing to be what it is, place.

**Ambiance** | place  
the identification of a sense response

- feeling. IDENTIFY | the essence of a particular place
- feeling. IDENTITY | the cultural artifact that marks the terrain in time
- feeling. IDENTIFICATION | the root form of thought from which time is bridged

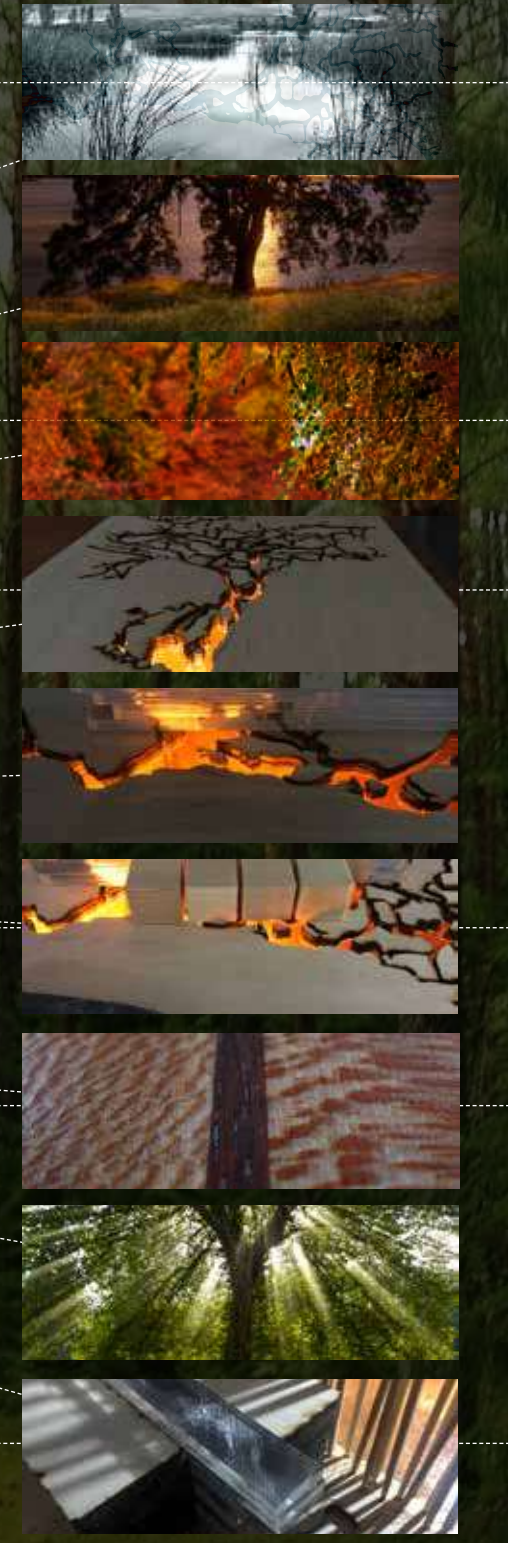
**Essence** | typology  
the inherent nature of an identified form

- form. POTENTIAL | the essence form as a recognition of intentionality
- form. IDEAL | the essence of form as an sculpted sensation of textures
- form. DETERMINED | the conceptualization of thoughts as an organized entity

**Surface** | program  
the embodied phenomena as a potential moment

- experience. TEXTURE | the existence of materials as a interpretation of place
- experience. LIGHT | the essence of light as a presence revealing the textural nature within
- experience. AMBIENT | an artifact that is potential material formation emerging within existing topographies derived from cultural actions.

ambiance | essence | surface



ambiance.ESSENCE | **the WETLAND** is the fertile terrain upon which all settle.

ambiance.ARTIFACT | **COTTONWOOD** is the cultural artifact deposited to shelter the first miner and all that came after.

ambiance.FORM | **the CANOPY** is the cultural form derived from an experience of texture and light along the paths of Sacramento.

essence.POTENTIAL | the **canopy** is a way of thinking about **wetlands**.

essence.IDEAL | the form as imagined is a sinuous **confluence** emitting light.

essence.DETERMINED | the form is a concentration of **forms** and **volumes** of light.

surface.TEXTURE | the essence of sycamore is an interlocking **grain** that engenders a reddish brown speckled **tone**...

surface.LIGHT | the essence of light is a volume of **filtered** energy... **ALDER**

surface.FORM | The Canopy... This life form becomes a host (hospice) of **soothing lighting**.





NOTES ON SITE

SITE AREA	5,700 square meters
BUILDABLE AREA	3,420 square meters
DESIGN PROGRAM	1,000 square meters
OPEN SPACE AREA	2,280 square meters
MAXIMUM HEIGHT LIMIT	10 meters
SITE TEMPERATURE RANGE (HIGH/ LOW)	July 29c average/January 13c average
WINDIEST MONTH	June 10km average
AVERAGE HUMIDITY	February 66%
PREVAILING WINDS (MAXIMUM)	
RAINFALL (YEARLY AVERAGE)	30.5 mm
SUN ANGLES (SUMMER/ WINTER)	81.4* summer/ 25.51* winter
LOCAL ENVIRONMENTAL CATASTROPHIES	Sand Storms
SHADOW LENGTH	0.15m summer/ 2.10m winter
CLIMATE	Hot semi-arid
POPULATION	1,017,379 (2021 Marrakech)

theLOOM  
COMPETITION PROPOSAL 2021 | marrakech, morocco  
where we begin is where we shall inevitably end... FABRIC becomes



condition | Chefchaouen



condition | Fez



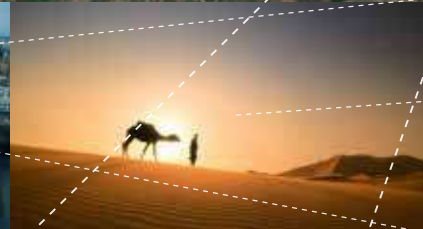
condition | Rabat



condition | Casablanca



condition | Essaouira



condition | Sahara Desert



condition | Atlas Mountains

ambiance. place | the identification of a sense response. theLOOM



conditions | Marrakech City

condition | site and immediate context

conditions | marrakech extended context

conditins | political context





MAPimage | cultural fabric of morocco...MARRAKECHIANS

MAPimage | cultural fabric of morocco...CULTURAL ACTIVITIES

MAPimage | cultural fabric of morocco...CULTURAL FORMS

FABRIC | the essence of Morocco.

CARPET | people as cultural artifacts.

PATCH | the cities stitched of material culture.

LOOM | the architectural object.

ESSENCE | FABRIC... the place, Morocco is a confluence of dense textures. **شكّارم**

**The LOOM**

The primary thought sponsoring this work is Morocco is a topography that reveals a cultural fabric. Thus this work suggests that the essence of Morocco is a dense fabric composed of a variety of patches.

The conceptualization of Surface

**TOPOGRAPHY**

Densities are particular arrangements of elements forming a tapestry of phenomena recognized as spatial form. Form occurs on multiples levels. The first level design consists of the cities being patches of form. The second noticeable level is the city level within their walled city (Medina) forms inside which objects are irregular.

FABRIC...the essence

An oasis is an organic 'patch' that draws inward the energy of a desolate topography. Once brought forth diverse collection as such becomes a recumbent form as if a 'cultural fabric' of dense strands (textures). The textures as experienced become more as they are continually stitched and restitched in time. From this becomes a cultural oasis along the edge of the Lalla Takerkoust (lake). The oasis is the site within which the Moroccan energy is captured and flows thru a blend of artful volumes. Light permeates through rhythmic tones of red (MARRAKECH RED CITY - شكّارم عارم حلا ةذي دمل) and indigo (Mecca, the site of the spirit).

Surfaces are natural occurrences continually becoming a matter of cultural erosion. The enduring occurrence formed is a topography. Morocco is an organic situation crafted of densities, forms, and flows. The essence of Morocco is a cultural 'fabric' continually formed, reformed, and eroded. That which becomes a tapestry of spatial strands is a composition of patches or situational moments. The moments within the fabric of Morocco are divergent cityscapes. These cityscapes locate the colorful historic nature of Moroccan civilization. The patchwork of cities as identified are essential to the composition of this place.

CONDITIONS | PATCH...the phenomena, of colored cities stitched as if to patch time....

**EROSION**

Contextual Erosion as the processes and residual accumulations of force (what) affecting existing spatial forms.

PATCH...the phenomena that are.

The local phenomenon within the fabric of Morocco is the strand of patches or cities. The patches exist as sites of cultural erosion. The cities of Morocco compose a series of moments that collectively mark the spirit of Morocco. The patches (cities) share common notions regarding religion, food, clothing, language, art, poetry, music, and architecture evoking a sense of place.

The cultural 'erosion' that exists within is actions or forces that affect spatial form. What are spatial objects? Objects are any or all of the given cultural artifacts that litter the topographical fabric of Moroccan cities such as Rabat, Fez, Casablanca, Agadir, Essaouira, Chefchaouen, and Marrakech. These cities are collections of tone and textural fibers continually re-crafting a spatial continuum. The finely crafted patchwork sorts and re-orders how cultural forms meander as harmonious artifacts.

FORMS | LOOM... the object, becomes tool from within which culture becomes more.

**ARTIFACTS**

material formations emerge from cultural actions of force that encourage/inspire indeterminate energies to reveal contextual contours

LOOM... the object becomes.

The loom herein is an artifact that binds divergent strands of culture into a harmonious labyrinth of colored surfaces blending artful volumes permeated by rhythm tones. Once formed, simple forms, volume, colors, and textures shall exit as a derivation of the Amazigh or Berber looms that form new strands.

The loom is an architectural artifact that is a sensitive response to the fabric that is Morocco. This form becomes form within this place via the physical emergence of simple linear forms occupied by volumes. The rammed earth wall (local building technique) forms a series of layered voids generating a labyrinth-like quality of flow. The primary void of the object is a great void that is a continuous water garden. The garden is awash with natural light via three openings of light that permeate the linear mass. Within this blend of artful volumes, Moroccan Beldi Zellij patterned tiles respond to and are influenced by Mecca (blue-based tiles) and Marrakech (red-based tiles).

The color and tone of this cultural artifact reveal a sense of place. Marrakech embodied by the Cultural Center Marrakech. That which is a sensible response to the beauty of Morocco is an ambient form.

MARRAKECH, MOROCCO | Cultural Center

شكّارم عارم حلا ةذي دمل  
desig strategies | form, volume, color & texture

theLOOM

where we begin is where we shall inevitably end... FABRIC becomes COMPETITION PROPOSAL 2021 | marrakech, morocco

MARRAKECH CULTURAL CENTER  
شكارة مءارم ءال ءني ءم ل  
design strategies | form, volume, color & texture

AMBIENT FORM | Culture Center view from the northwest.  
The phenomena as experienced...form



MARRAKECH, MOROCCO | Cultural Center  
شركاء تارم حلا ة نني دمل  
design strategies | form, volume, color & texture



**ECOLOGY**  
WATER GARDEN | THERMAL ABSORPTION THROUGH THE INTERIOR GARDEN. THE VOLUME ALSO ACTS AS A CHIMNEY TO RELEASE HEAT USING CONVECTION CURRENTS.

**ECOLOGY**  
GEOTHERMAL COOLING | GROUND SOURCE COOLING TO PASSIVELY UTILIZE THE TEMPERATURE OF THE GROUND TO SUPPLY COOLING THROUGH THE FLOORS.

**ECOLOGY**  
GREEN ROOF | THERMAL ABSORPTION TO REDUCE HEAT GAIN THROUGH THE ROOF

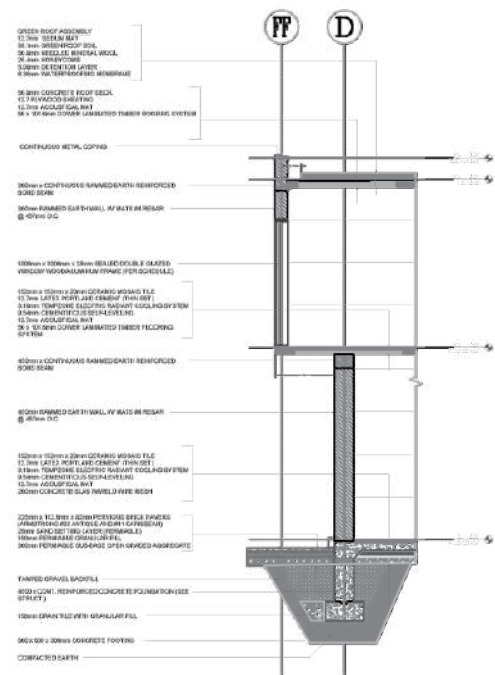
**ECOLOGY**  
DOUBLE GLAZING | MULTI PANE UNITS TO REDUCE SUMMER HEAT GAIN

**ECOLOGY**  
THERMAL MASS | RAMMED EARTH WALLS TO ABSORB AND RELEASE HEAT.

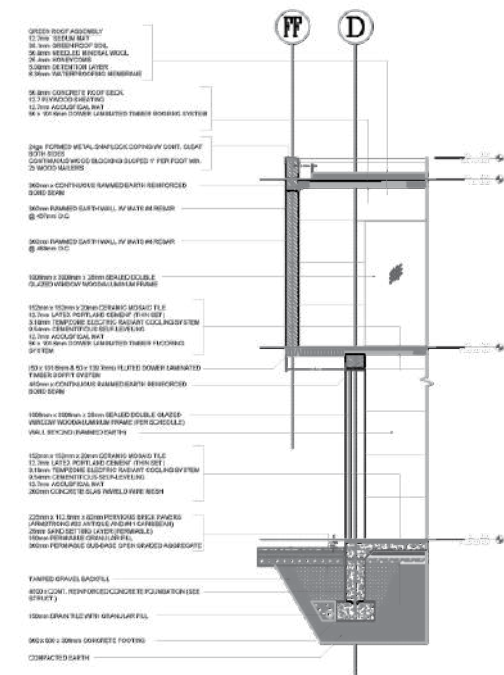
**ECOLOGY**  
PASSIVE COOLING | ORANGE AND LEMON TREES TO SHADE SOUTHERN WALL

**ECOLOGY**  
PAVING | PORUS PAVING TO REDUCE SURFACE PONDING OF WATER

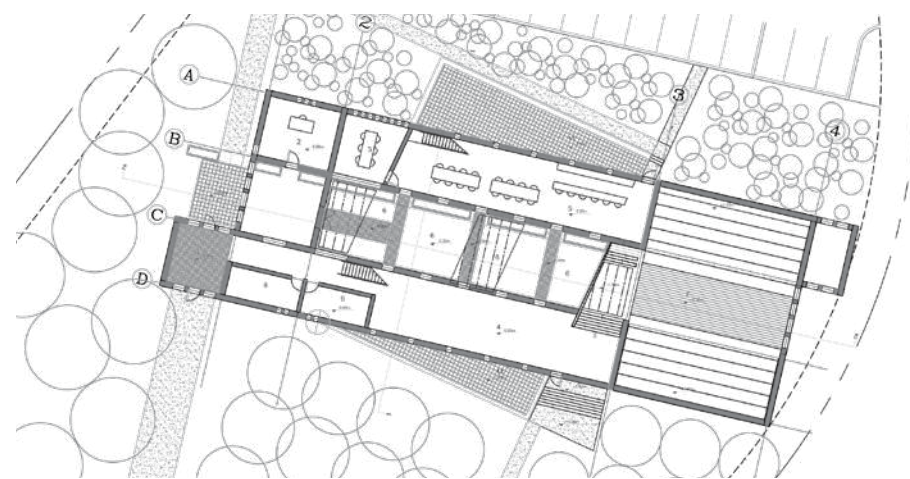
MARRAKECH, MOROCCO | Cultural Center  
مركز ثقافي غارم حلالا داني دمل  
design strategies | form, volume, color & texture



WALL SECTION A | NTS



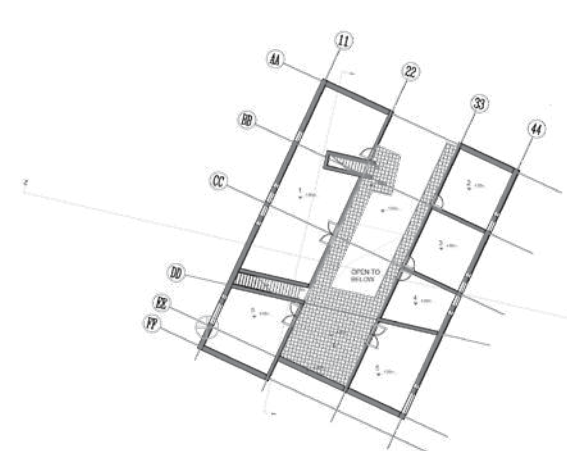
WALL SECTION B | NTS



GROUND LEVEL PLAN | SCALE 4:1

LEGEND (GROUND)

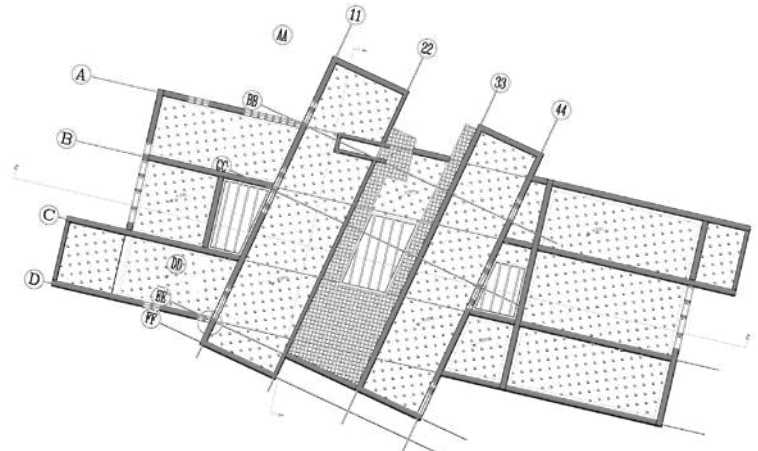
- 1. ENTRY
- 2. OFFICE
- 3. MEETING ROOM
- 4. EXHIBITION
- 5. RESTAURANT
- 6. WATER GARDEN
- 7. THEATRE
- 8. TOILET M
- 9. TOILET W
- 10. MECHANICAL
- 11. TERRACE



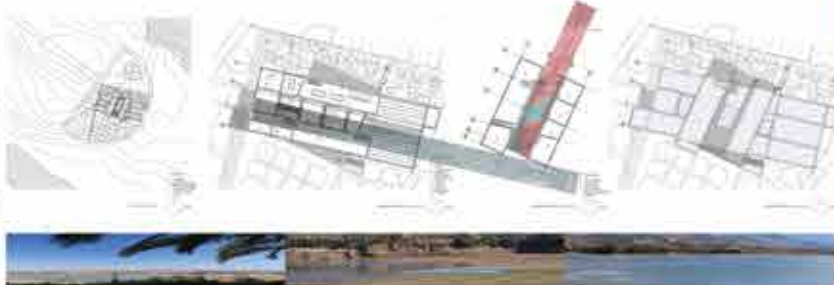
UPPER LEVEL PLAN | SCALE 4:1

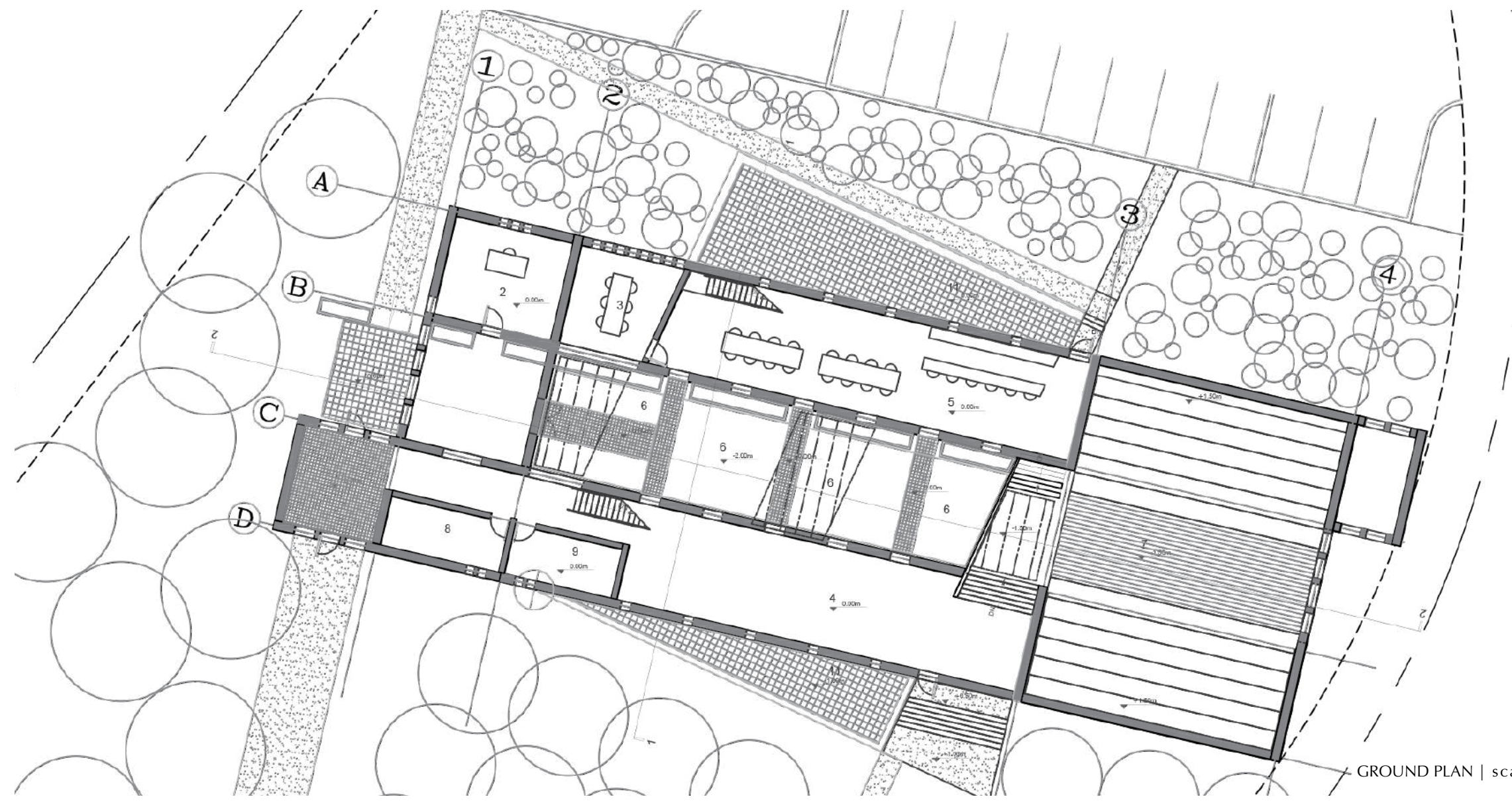
LEGEND (UPPER)

- 1. MEDIATHEQUE
- 2. STUDIO ONE
- 3. STUDIO TWO
- 4. STUDIO THREE
- 5. MUSIC CONSERVATORY
- 6. TERRACE



ROOF LEVEL PLAN | SCALE 4:1





GROUND PLAN | scale 1:500

MARRAKECH, MOROCCO | Cultural Center  
شكارم عارم حلالة ندي دم ل  
design strategies | form, volume, color & texture

Surface | **Methodology**      working sample B | Marrakech Cultural Center

### The Essence of Thoughts | **The Assemblage**

Thoughts essential to understanding surfaces as composition of bound essences that evoke a particular ambiance regarding. Each essence (poster) captures a mood (feeling) that is essential to the recognition of ambiance as potential. An essence identifies a particular core property that is essential for a thing to be what it is, place.

**Ambiance** | place  
the identification of a sense response

feeling. IDENTIFY | the essence of a particular place

feeling. IDENTITY | the cultural artifact that marks the terrain in time

feeling. IDENTIFICATION | the root form of thought from which time is bridged

**Essence** | typology  
the inherent nature of an identified form

form. POTENTIAL | the essence form as a recognition of intentionality

form. IDEAL | the essence of form as an sculpted sensation of textures

form. DETERMINED | the conceptualization of thoughts as an organized entity

**Surface** | program  
the embodied phenomena as a potential moment

experience. TEXTURE | the existence of materials as a interpretation of place

experience. LIGHT | the essence of light as a presence revealing the textural nature within

experience. AMBIENT | an artifact that is potential material formation emerging within existing topographies derived from cultural actions.



ambiance.ESSENCE | the **FABRIC** is a confluence of dense textures.

ambiance.ARTIFACT | **Patch** the phenomena, of colored cities stitched as if to patch time.

ambiance.FORM | the **LOOM** the object, becomes tool from within which culture becomes more.

essence.POTENTIAL | the **LOOM** is a way of thinking about **FABRIC**.

essence.IDEAL | the form as imagined is a blend of artful **VOLUMES**.

essence.DETERMINED | the form is an **AXIAL** composite of interwoven volumes.

surface.TEXTURE | the essence of **clay** is iron **oxide grains** absorbed into a gradient of **color**.

surface.LIGHT | the essence of light is a surface of voids **permeated** by rhythmic tones.

surface.FORM | The **LOOM**... a harmonious tapetry of diverse cultural **strands**.



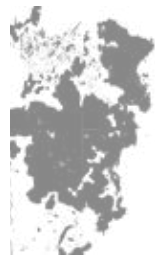
where we begin is where we shall inevitably end... PRESSURE becomes  
**theMEMBRANE**  
COMPETITION PROPOSAL 2021 | dimmuborgir, iceland

DIMMUBORGIR, ICELAND | Visitor Center

design strategies | plane, repetition & texture



map | GREENSPACE



map | WATER (lake)



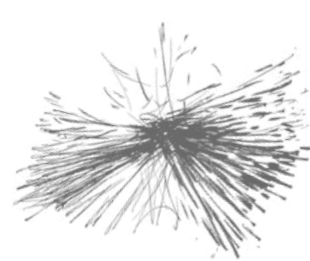
map | ROADS



force | WIND



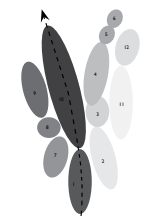
force | LIGHT



force | VIEWS (away)



form | CIRCULATION



form | BUBBLE DIA.



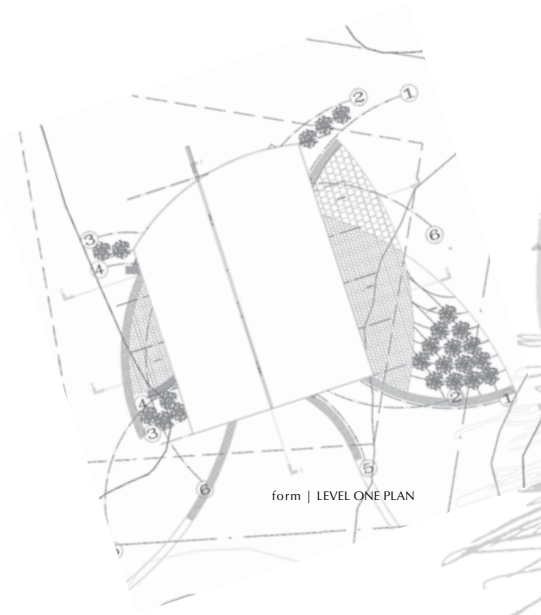
form | WALLS



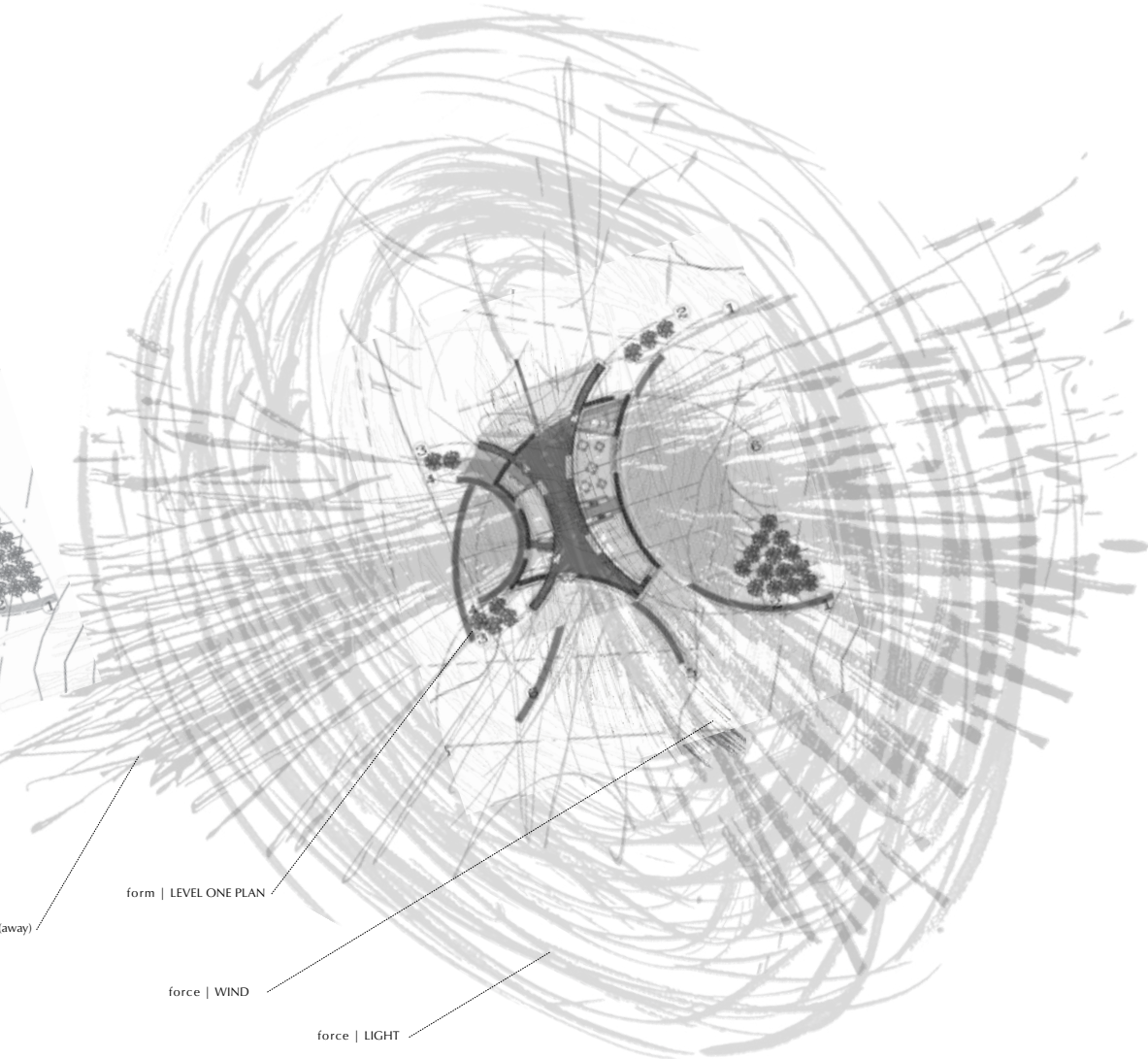
form | WALLS



form | MASSING



form | LEVEL ONE PLAN



force | VIEWS (away)

form | LEVEL ONE PLAN

force | WIND

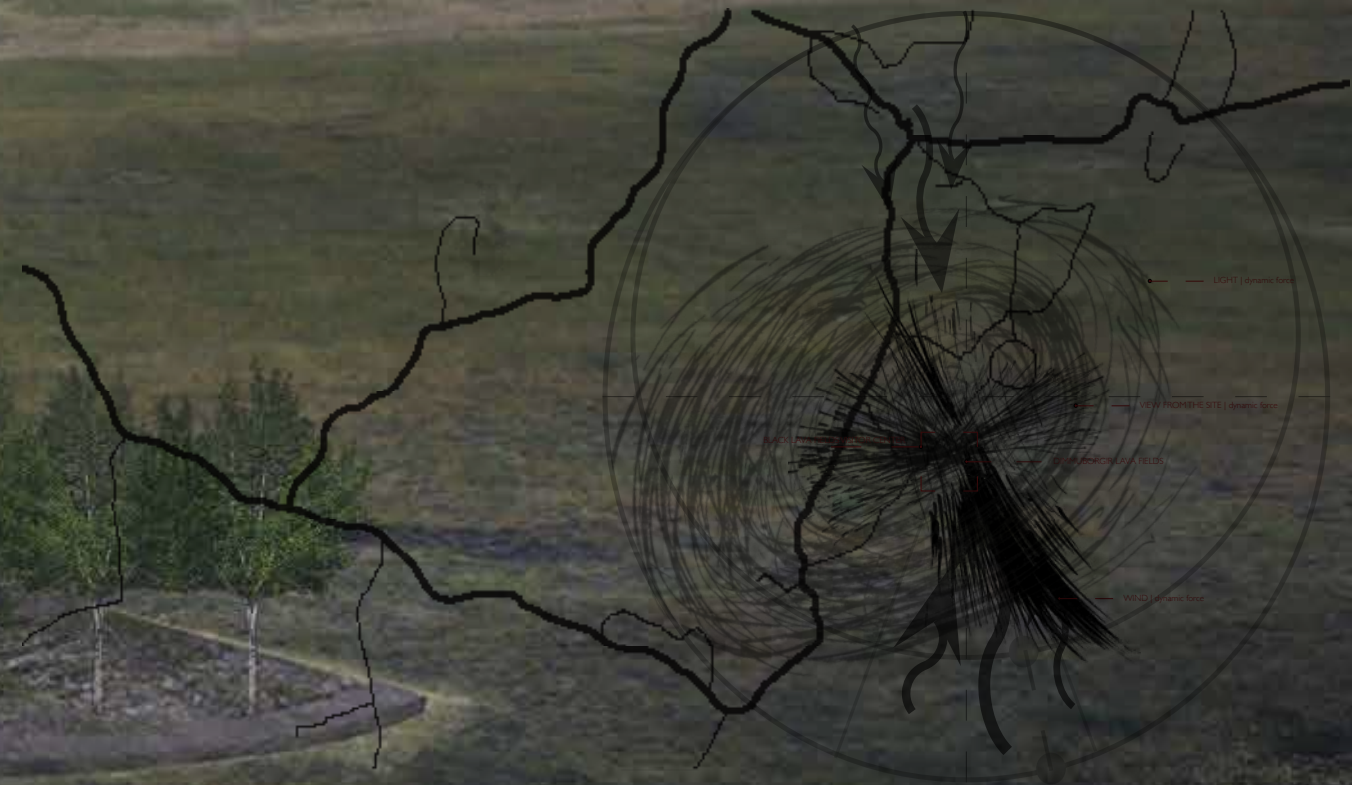
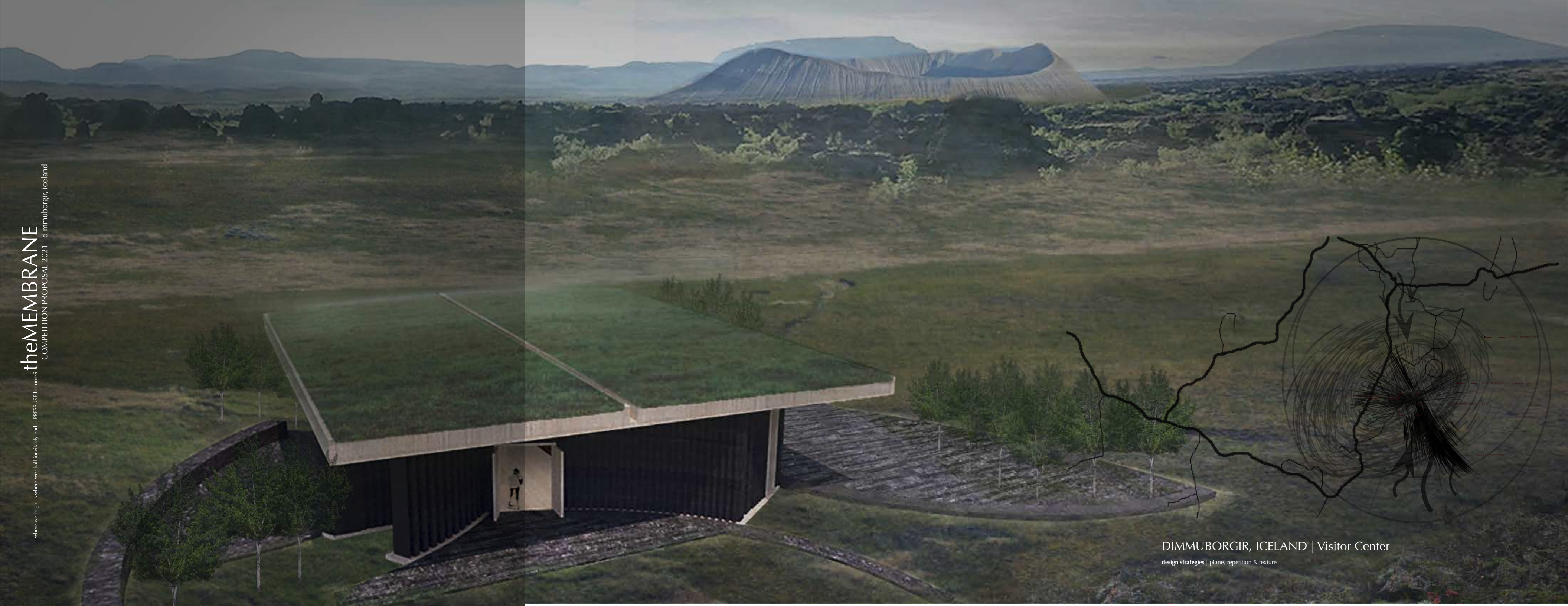
force | LIGHT

**SITE**analysis

**AMBIANCE** | Pressure is a sense of energy that exist as wind, light & view which form potential moments of the membrane...

**FORM**human activities + spatial experience

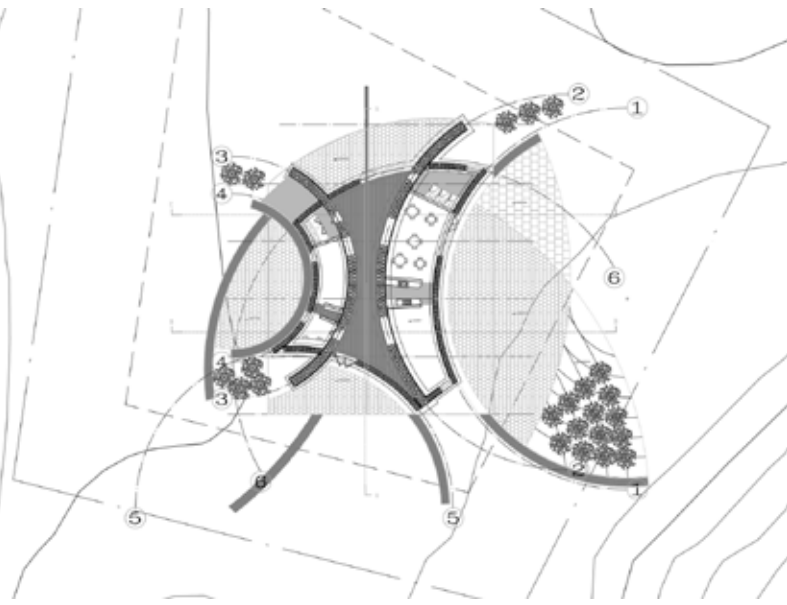
where we begin is where we shall inevitably end... PRESSURE becomes  
**theMEMBRANE**  
COMPETITION PROPOSAL 2021 | dimmuborgir, iceland



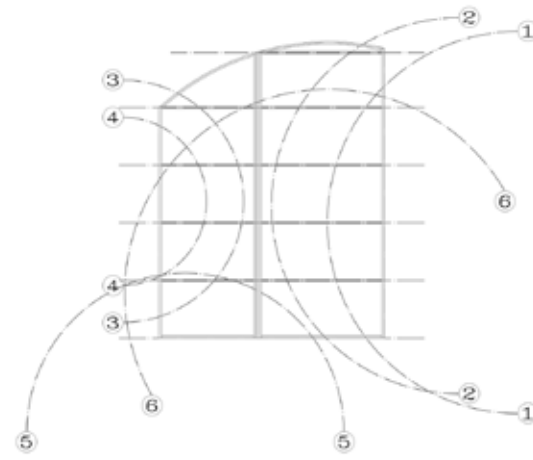
DIMMUBORGIR, ICELAND | Visitor Center  
design strategies | plane, repetition & texture



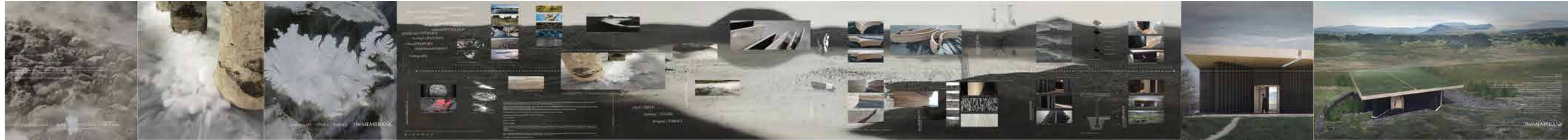
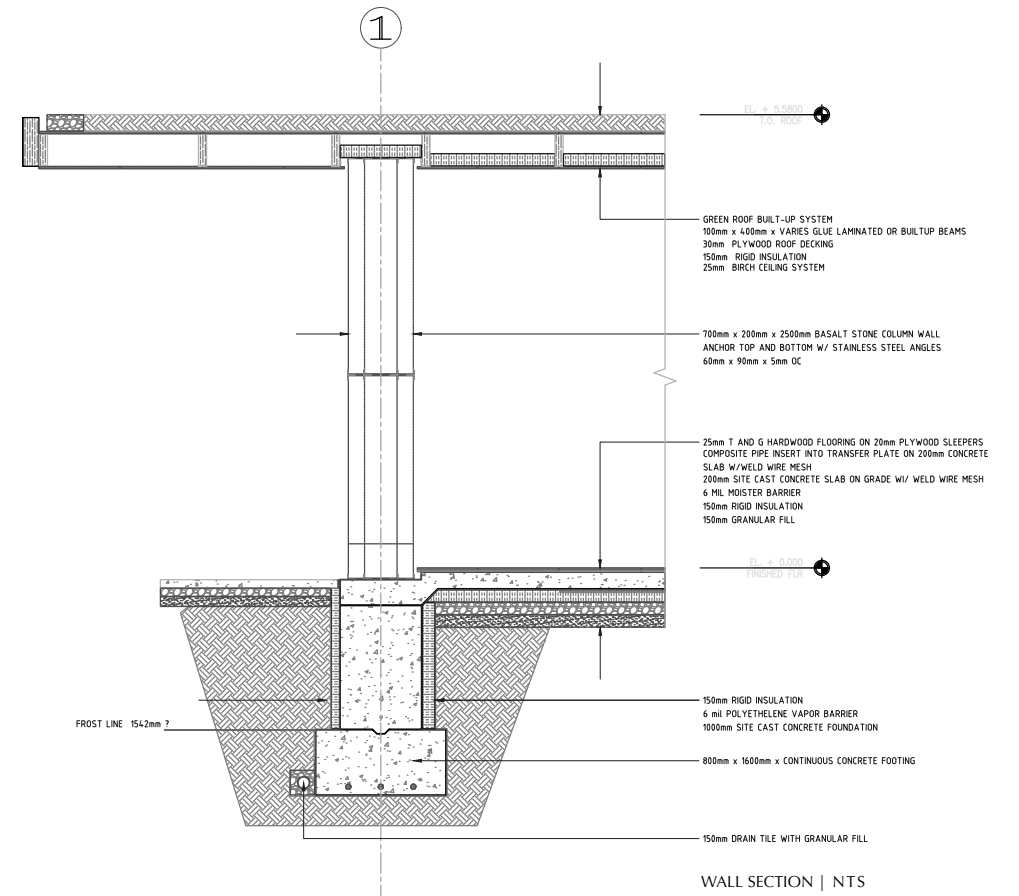
ROOF PLAN | NTS



LEVEL PLAN | NTS



PLAN (STRUCTURAL GRID) | NTS



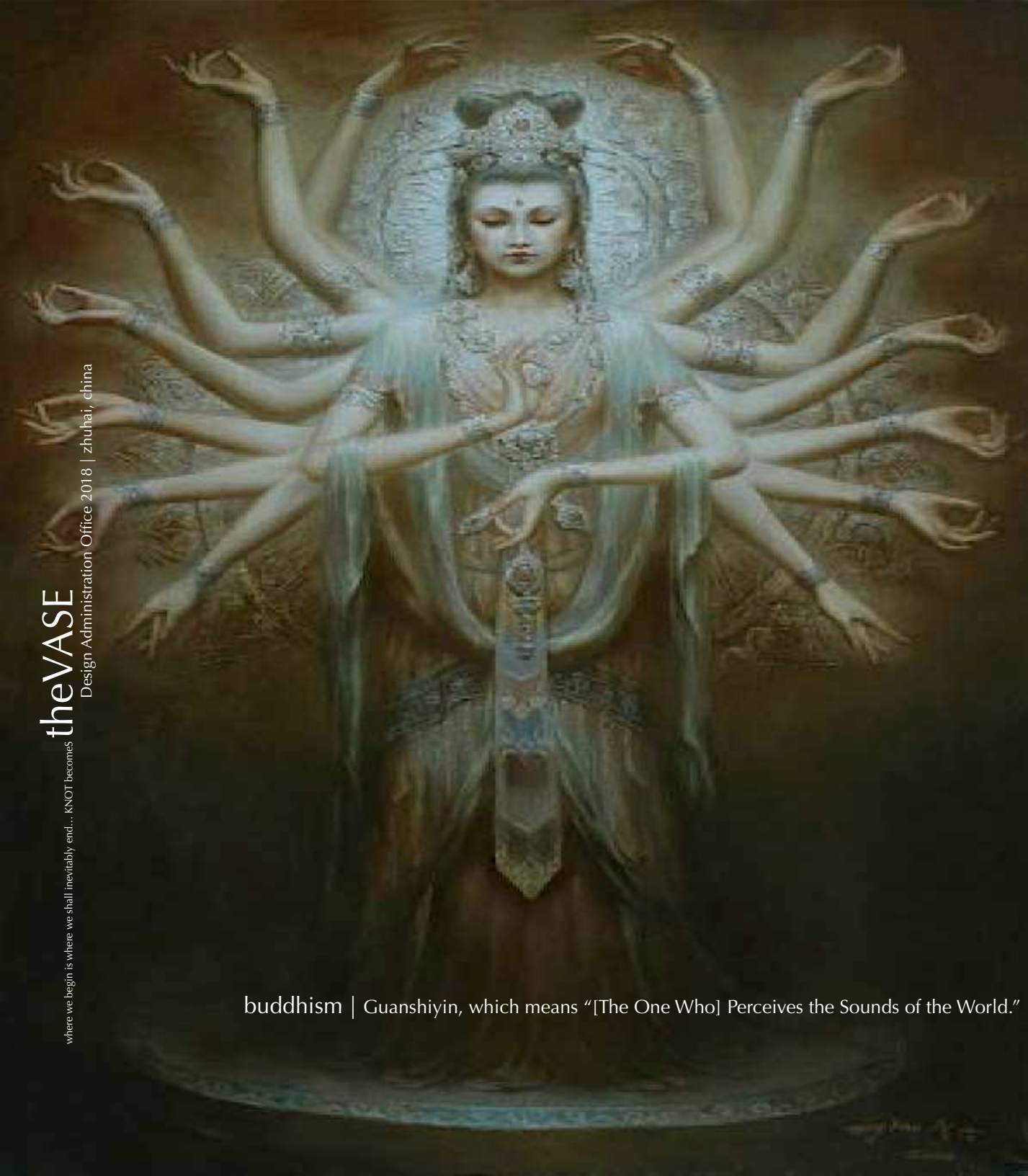
**DIMMUBORGIR, ICELAND | Visitor Center**

design strategies | plane, repetition & texture

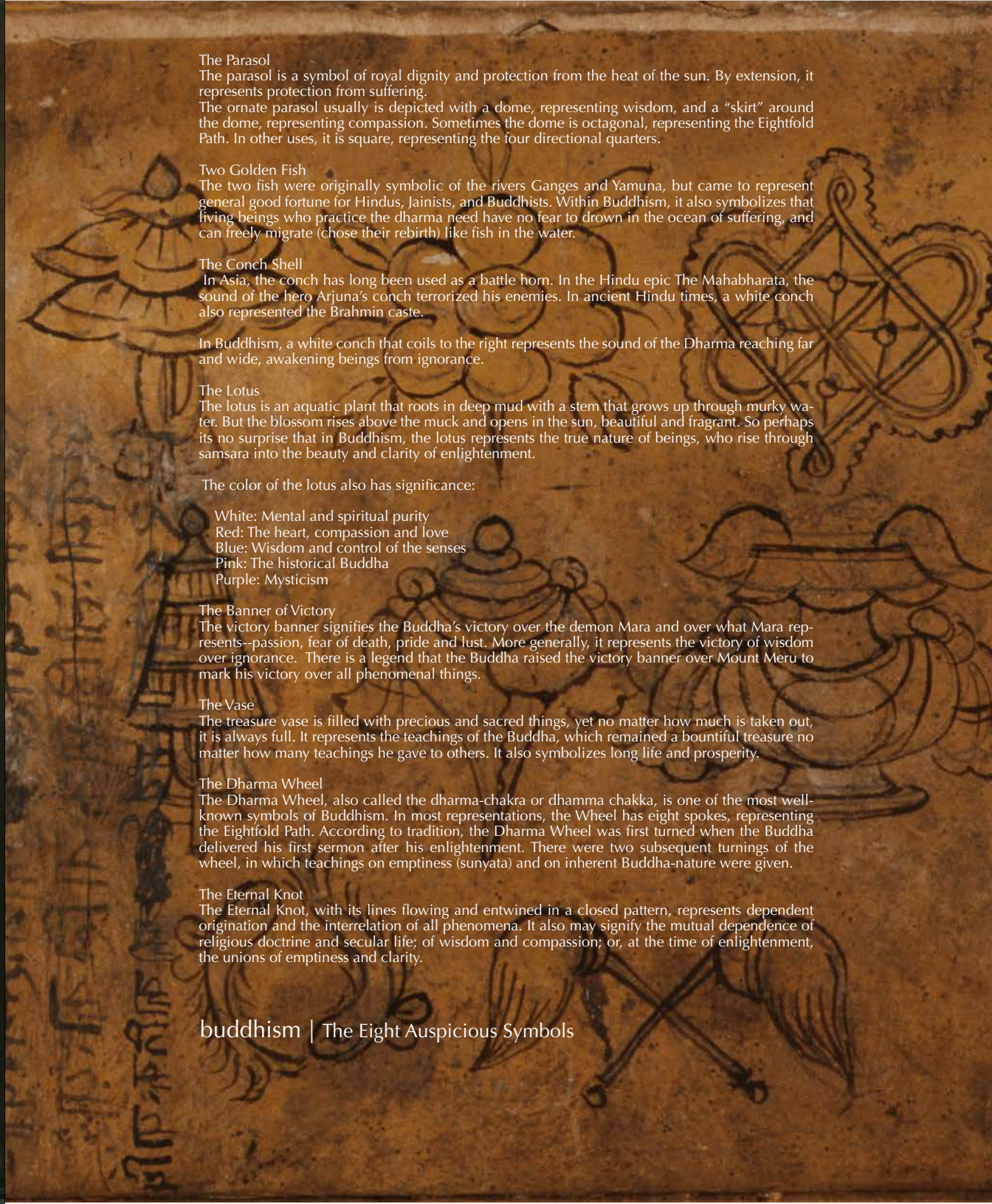


ZHUHAI, CHINA | Library Admissions & Employment Office

design strategies | void, repetition & form



buddhism | Guanshiyin, which means "[The One Who] Perceives the Sounds of the World."



**The Parasol**  
The parasol is a symbol of royal dignity and protection from the heat of the sun. By extension, it represents protection from suffering.  
The ornate parasol usually is depicted with a dome, representing wisdom, and a "skirt" around the dome, representing compassion. Sometimes the dome is octagonal, representing the Eightfold Path. In other uses, it is square, representing the four directional quarters.

**Two Golden Fish**  
The two fish were originally symbolic of the rivers Ganges and Yamuna, but came to represent general good fortune for Hindus, Jainists, and Buddhists. Within Buddhism, it also symbolizes that living beings who practice the dharma need have no fear to drown in the ocean of suffering, and can freely migrate (chose their rebirth) like fish in the water.

**The Conch Shell**  
In Asia, the conch has long been used as a battle horn. In the Hindu epic The Mahabharata, the sound of the hero Arjuna's conch terrorized his enemies. In ancient Hindu times, a white conch also represented the Brahmin caste.

In Buddhism, a white conch that coils to the right represents the sound of the Dharma reaching far and wide, awakening beings from ignorance.

**The Lotus**  
The lotus is an aquatic plant that roots in deep mud with a stem that grows up through murky water. But the blossom rises above the muck and opens in the sun, beautiful and fragrant. So perhaps its no surprise that in Buddhism, the lotus represents the true nature of beings, who rise through samsara into the beauty and clarity of enlightenment.

The color of the lotus also has significance:

- White: Mental and spiritual purity
- Red: The heart, compassion and love
- Blue: Wisdom and control of the senses
- Pink: The historical Buddha
- Purple: Mysticism

**The Banner of Victory**  
The victory banner signifies the Buddha's victory over the demon Mara and over what Mara represents—passion, fear of death, pride and lust. More generally, it represents the victory of wisdom over ignorance. There is a legend that the Buddha raised the victory banner over Mount Meru to mark his victory over all phenomenal things.

**The Vase**  
The treasure vase is filled with precious and sacred things, yet no matter how much is taken out, it is always full. It represents the teachings of the Buddha, which remained a bountiful treasure no matter how many teachings he gave to others. It also symbolizes long life and prosperity.

**The Dharma Wheel**  
The Dharma Wheel, also called the dharma-chakra or dhamma chakka, is one of the most well-known symbols of Buddhism. In most representations, the Wheel has eight spokes, representing the Eightfold Path. According to tradition, the Dharma Wheel was first turned when the Buddha delivered his first sermon after his enlightenment. There were two subsequent turnings of the wheel, in which teachings on emptiness (sunyata) and on inherent Buddha-nature were given.

**The Eternal Knot**  
The Eternal Knot, with its lines flowing and entwined in a closed pattern, represents dependent origination and the interrelation of all phenomena. It also may signify the mutual dependence of religious doctrine and secular life; of wisdom and compassion; or, at the time of enlightenment, the unions of emptiness and clarity.

buddhism | The Eight Auspicious Symbols



buddhism | the eternal knot

ZHUHAI, CHINA | Library Admissions & Employment Office

design strategies | void, repetition & form



buddhism | the inspired flow of energy within | out

ZHUHAI, CHINA | Library Admissions & Employment Office

design strategies | void, repetition & form

theVASE

where we begin is where we shall inevitably end... KNOT becomes

Design Administration Office 2018 | zhuhai, china



ZHUHAI, CHINA | Library Admissions & Employment Office

design strategies | void, repetition & form

TEXTURE | Bamboo structural detail... materials | glue laminated bamboo, limestone, glass



the VASE

Design Administration Office 2018 | zhuhai, china

where we begin is where we shall inevitably end... KNOT becomes



ZHUHAI, CHINA | Library Admissions & Employment Office

design strategies | void, repetition & form



theVASE

Design Administration Office-2018 | zhuhai, china

where we begin is where we shall inevitably end... KNOT becomes



ZHUHAI, CHINA | Library Admissions & Employment Office

design strategies | void, repetition & form

theVASE

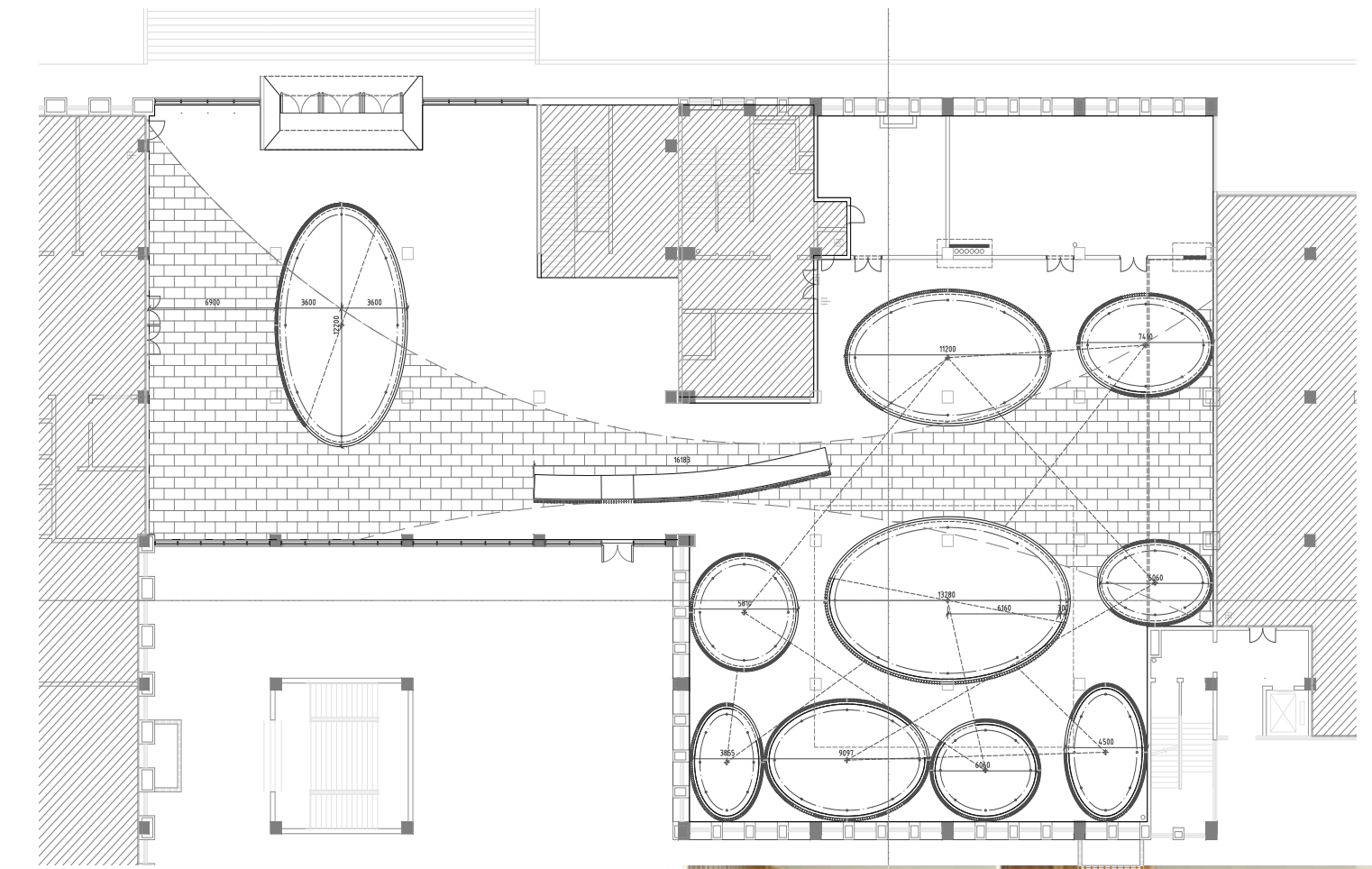
Design Administration Office 2018 | zhuhai, china

where we begin is where we shall inevitably end... KNOT becomes

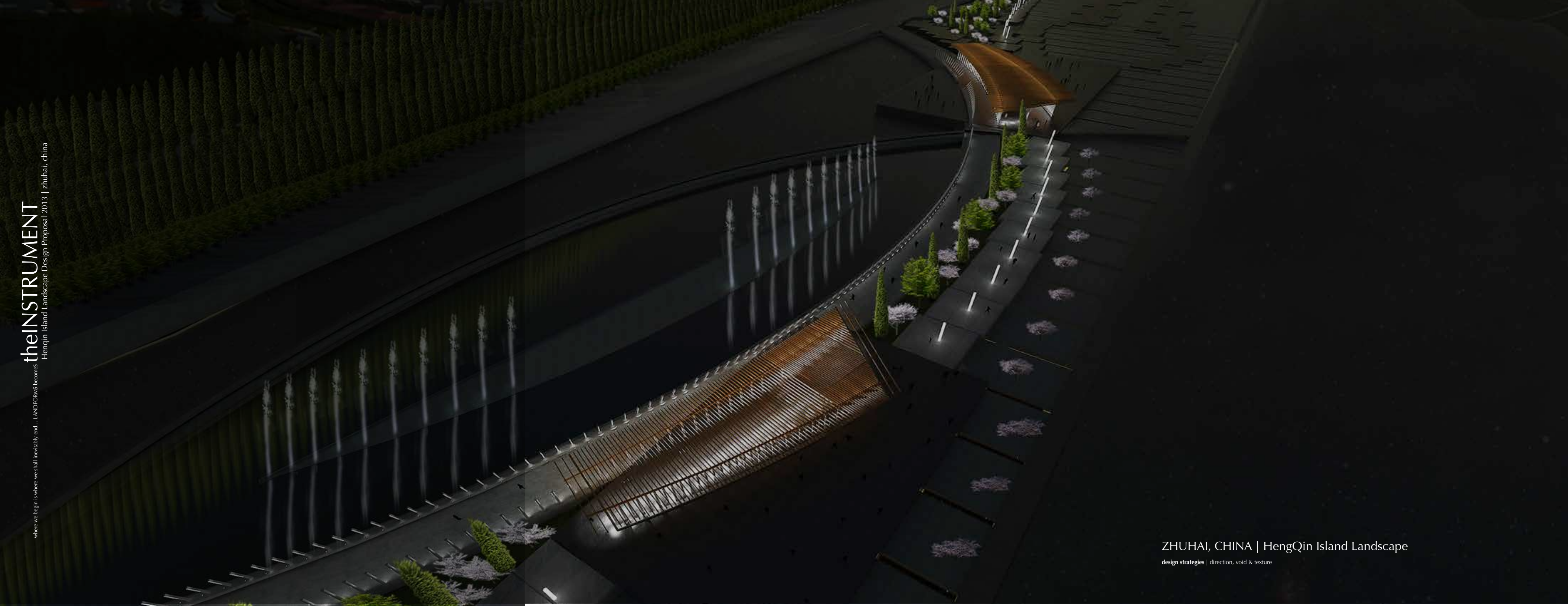


ZHUHAI, CHINA | Library Admissions & Employment Office

design strategies | void, repetition & form



ZHUHAI, CHINA | Library Admissions & Employment Office  
design strategies | void, repetition & form

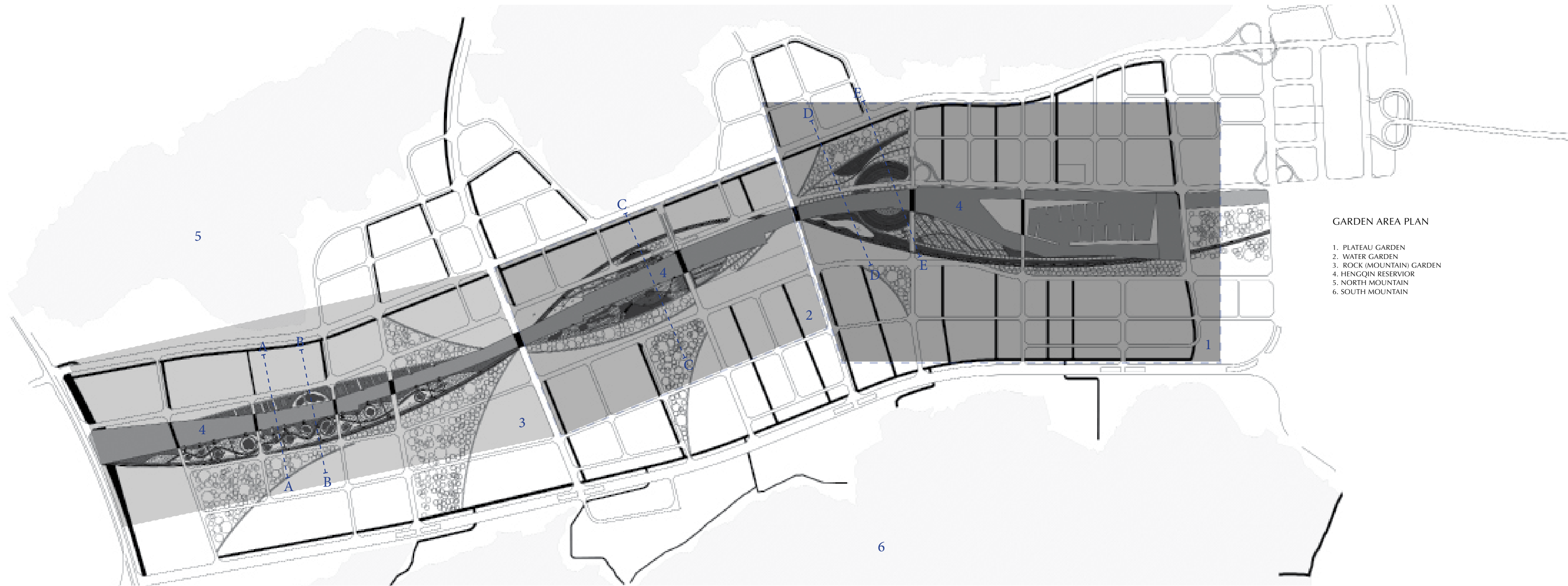


theINSTRUMENT

where we begin is where we shall inevitably end... LANDFORMS becomes HengQin Island Landscape Design Proposal 2013 | zhuhai, china



ZHUHAI, CHINA | HengQin Island Landscape  
design strategies | direction, void & texture

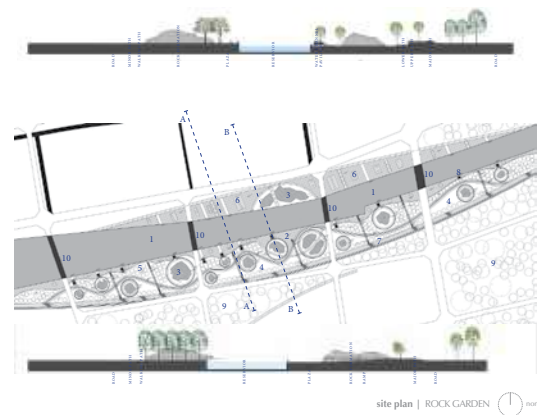


GARDEN AREA PLAN

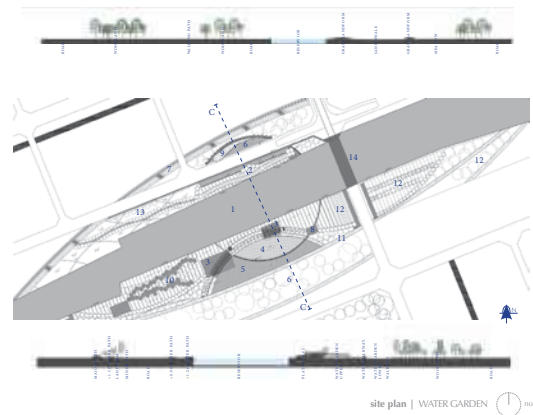
- 1. PLATEAU GARDEN
- 2. WATER GARDEN
- 3. ROCK (MOUNTAIN) GARDEN
- 4. HENGQIN RESERVIOR
- 5. NORTH MOUNTAIN
- 6. SOUTH MOUNTAIN



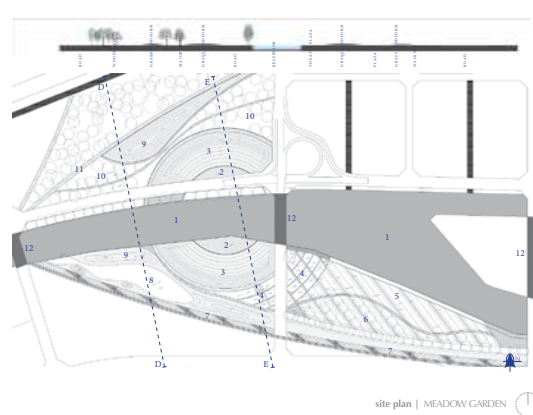




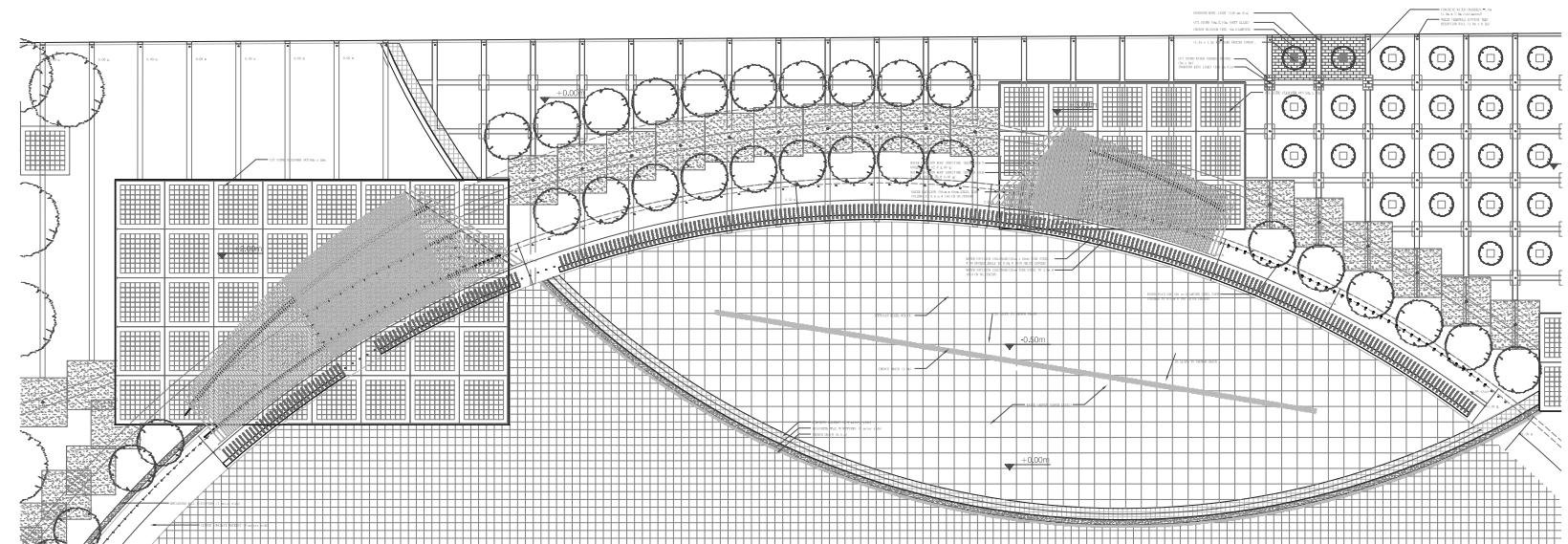
site plan | ROCK GARDEN



site plan | WATER GARDEN



site plan | MEADOW GARDEN



theINSTRUMENT

where we begin is where we shall inevitably end... LANDFORMS becomes  
HengQin Island Landscape Design Proposal 2013 | zhuhai, china



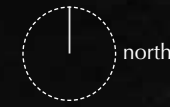
ZHUHAI, CHINA | HengQin Island Landscape  
design strategies | direction, void & texture



• site plan | ROCK GARDEN

• site plan | WATER GARDEN

• site plan | MEADOW GARDEN



ZHUHAI, CHINA | HengQin Island Landscape  
design strategies | direction, void & texture

grounding...



Surface | **Methodology**      working sample A | Sacramento Youth Hospice

The Essence of Thoughts | **The Assemblage**

Thoughts essential to understanding surfaces as composition of bound essences that evoke a particular ambiance regarding. Each essence (poster) captures a mood (feeling) that is essential to the recognition of ambiance as potential. An essence identifies a particular core property that is essential for a thing to be what it is, place.

**Ambiance** | place  
the identification of a sense response

- feeling. IDENTIFY | the essence of a particular place
- feeling. IDENTITY | the cultural artifact that marks the terrain in time
- feeling. IDENTIFICATION | the root form of thought from which time is bridged

**Essence** | typology  
the inherent nature of an identified form

- form. POTENTIAL | the essence form as a recognition of intentionality
- form. IDEAL | the essence of form as an sculpted sensation of textures
- form. DETERMINED | the conceptualization of thoughts as an organized entity

**Surface** | program  
the embodied phenomena as a potential moment

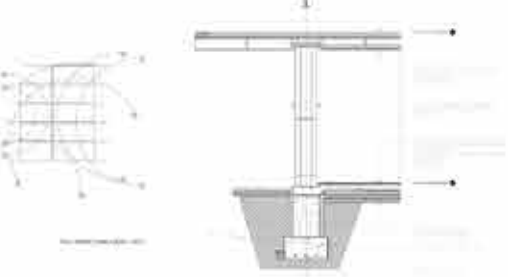
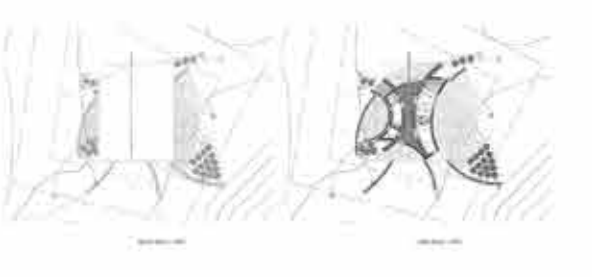
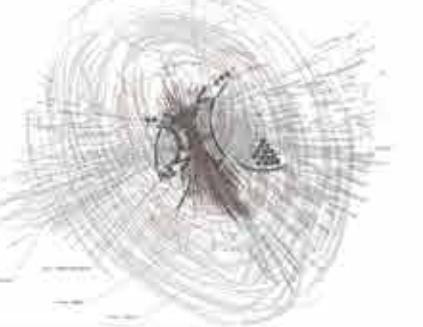
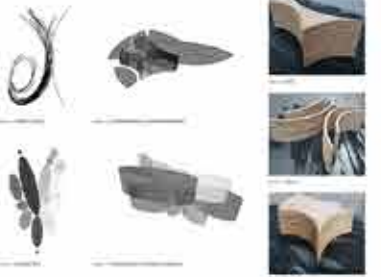
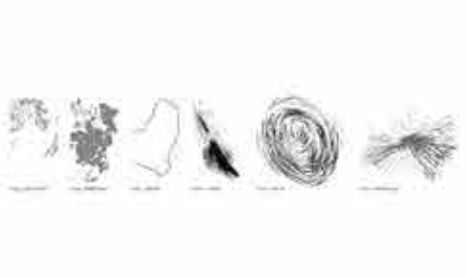
- experience. TEXTURE | the existence of materials as a interpretation of place
- experience. LIGHT | the essence of light as a presence revealing the textural nature within
- experience. AMBIENT | an artifact that is potential material formation emerging within existing topographies derived from cultural actions.

grounding...



place | typology | program

www.surfacestudio.org | jb



grounding...



place | typology | **program**

(A)rchitecture as design is the artful play of texture and lightness...

|  
GROUNDING

[www.surfacestudio.org](http://www.surfacestudio.org)