

where we begin is where we shall inevitably end... PRESSURE becomes
theMEMBRANE
COMPETITION PROPOSAL 2021 | dimmuborgir, iceland

Dimmuborgir Lava Fields Visitor Center

For our group beauty is a search for something essential to a place which can only become via our energy and effort. We always intend to take that which is deemed the ESSENCE of a place and interpret what the potential of that energy can become as an earthly material formation.

We begin from LAND because our collective thought is that the energy of architectural expression is grounded and emerges. We do not differentiate between the natural or the manmade because these simplistic differentiations only serve to distract from the place to be explored. We seek to sense how the environment will become enriched by simplistic thoughts that become sensuous experiences of texture and light. The existing, whatever it may be can become only by sensing to find the only appropriate material (texture) introduced via light to the world of humans.

Pressure is the 1st thought and Membrane was the idea. The site analysis notion of Pressure is about fluids that exist as water, lava, ice, vapor, steam, wind and light. These are all natural phenomena that sponsor the thought response (feeling). After I finished the diagrams I need to complete the thought about what the three diagrams (wind, views and light) are as a form which I say are fluids.

So the statement introduces FLUID in to the project as a sense form about the site that exist as wind, views and light.

At the beginning of all projects I introduce PLACE | TYPOLOGY | PROGRAM

PLACE		LAVA FIELDS
TYPOLOGY		CENTER
PROGRAM		TERRACE

I suggest all project have to address these three conditions. The program is a way to get into human activities. In this project the Terrace form was introduced as a horizontal form that sits on the land. The horizontal form I introduced at the beginning becomes different forms in the project. The first form is the roof form. I am sensing fluids now so the fluids become a membrane. Membrane = Terrace

I believe the thought was that the roof form would be a smooth flowing form. A series of vertical elements (columns) would be smooth textural forms. This is why I use the word membrane. I could not continue to use the word terrace because it does not apply to vertical elements.

layered fluid = smooth flowing forms (horizontal or vertical)



Dimmuborgir Lava Fields Visitor Center



theMEMBRANE

where we begin is where we shall inevitably end... PRESSURE becomes



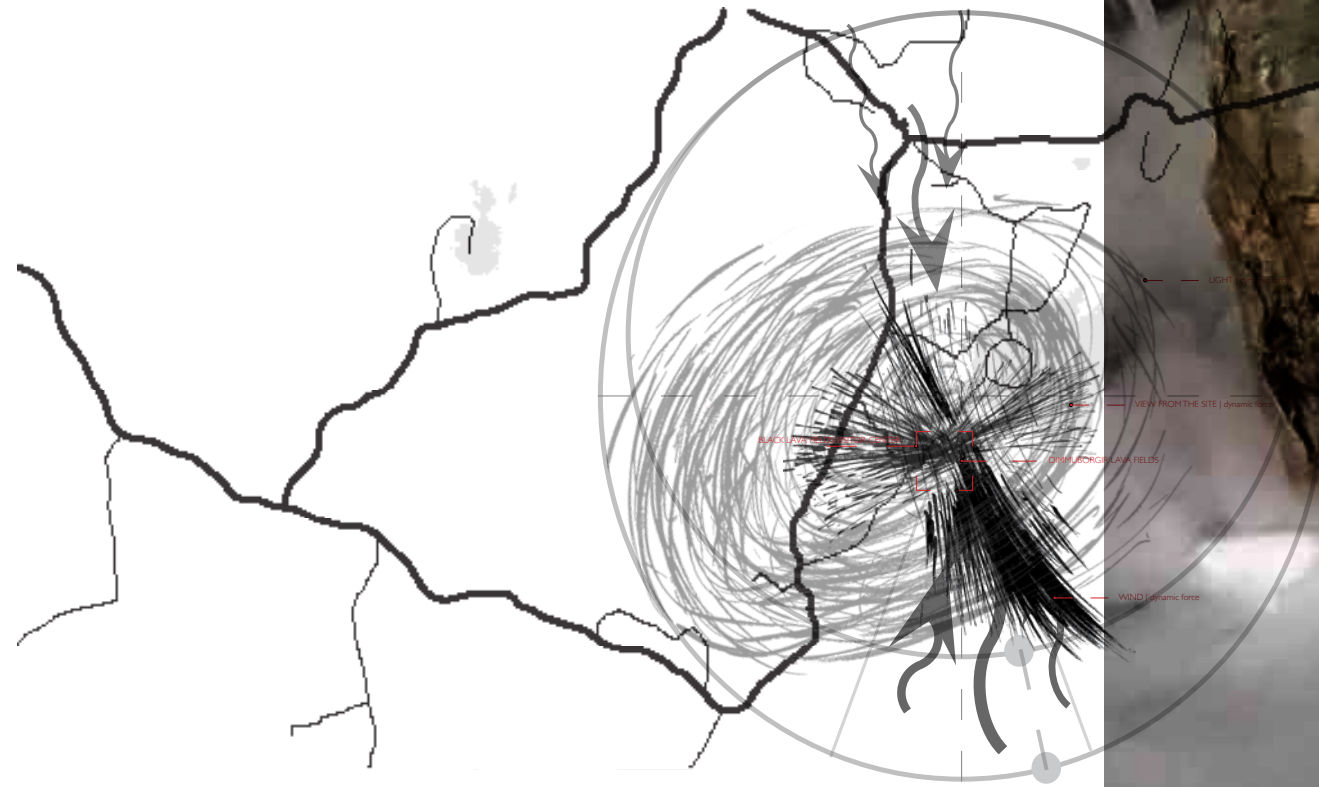
Image | Take on site



Dimmuborgir Lava Fields Visitor Center

theMEMBRANE

where we begin is where we shall inevitably end... PRESSURE becomes



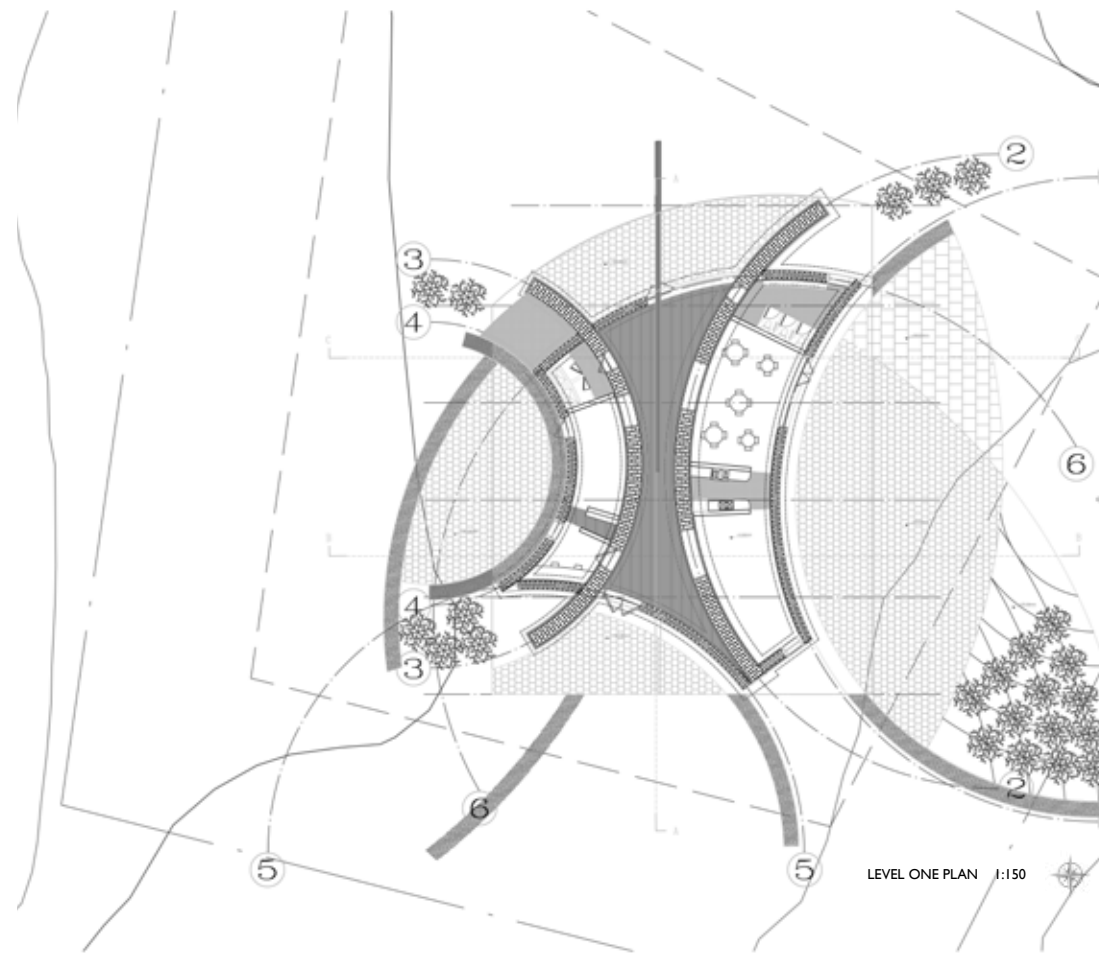
identificationsCOLLECTION | THE BIRCH TREE IS A LOCAL PHENOMENA that endures pressure within the tundra...



Dimmuborgir Lava Fields Visitor Center

theMEMBRANE

where we begin is where we shall inevitably end... PRESSURE becomes



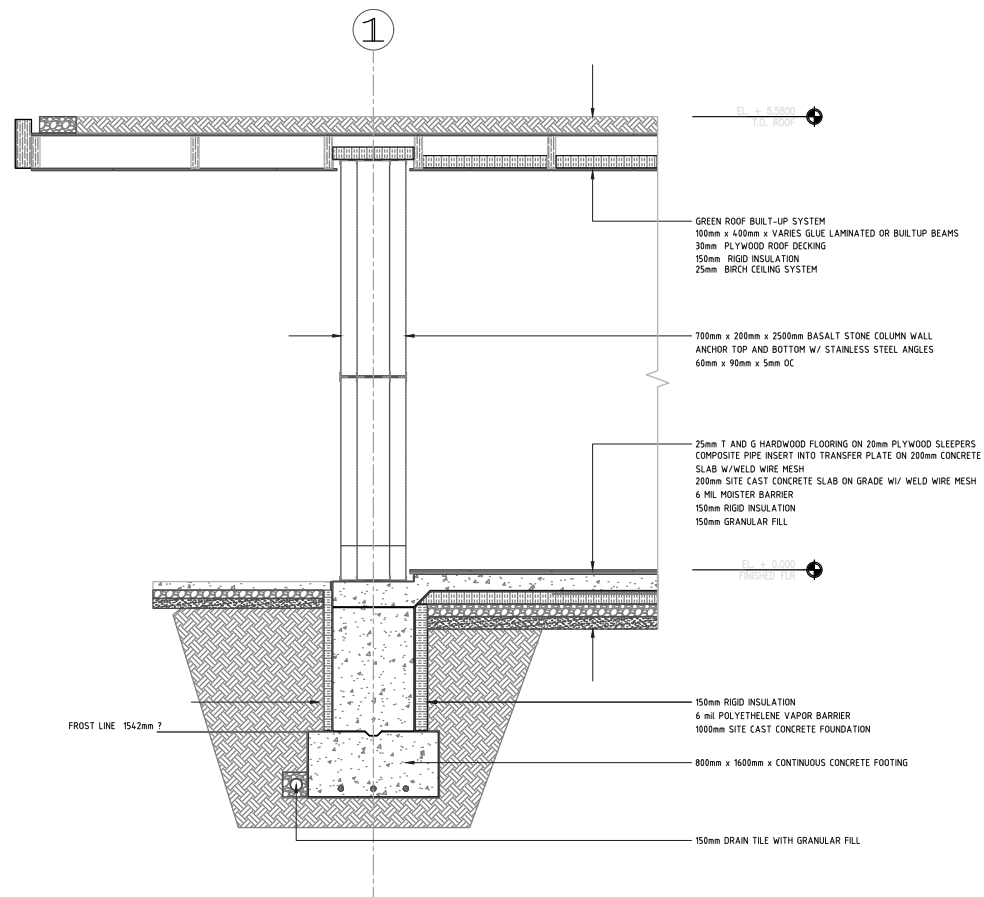
surfaceANALYSIS | PRESSURE is a sense of LIQUID that exist as WIND, LIGHT & VIEWS that form potential moments of the MEMBRANE...



Dimmuborgir Lava Fields Visitor Center

energy and flow | formation | form

where we begin is where we shall inevitably end... PRESSURE becomes theMEMBRANE



surfacePHENOMENA | Fluid flowing thru a void of gradient light into LIGHT...



surfacePHENOMENA | that which is formed to be a sense of gradient INFLUENCE...

Dimmuborgir Lava Fields Visitor Center

where we begin is where we shall inevitably end... PRESSURE becomes
theMEMBRANE
COMPETITION PROPOSAL 2021 | dimmuborgir, iceland



Dimmuborgir Lava Fields Visitor Center