



PHOTO: J. GARCIA
"WALLS ARE PERCEPTUAL BARRIERS THAT ARE NOT NECESSARILY MADE OF SOLID MATERIALS. BARRIERS IN A SENSE ABOUT HEIGHT AND SCALE."

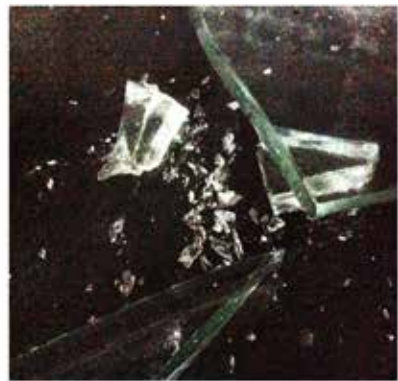


PHOTO: J. GARCIA
"A WALL IS A PERCEPTUAL BARRIERS THAT ARE NOT NECESSARILY MADE OF SOLID MATERIALS. BARRIERS IN A SENSE ABOUT HEIGHT AND SCALE."



PHOTO: J. GARCIA
"A WALL IS A PERCEPTUAL BARRIERS THAT ARE NOT NECESSARILY MADE OF SOLID MATERIALS. BARRIERS IN A SENSE ABOUT HEIGHT AND SCALE."

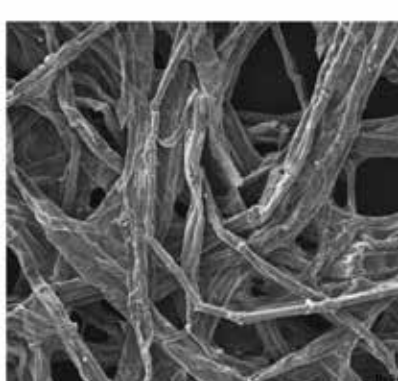


PHOTO: J. GARCIA
"A WALL IS A PERCEPTUAL BARRIERS THAT ARE NOT NECESSARILY MADE OF SOLID MATERIALS. BARRIERS IN A SENSE ABOUT HEIGHT AND SCALE."



PHOTO: J. GARCIA
"A WALL IS A PERCEPTUAL BARRIERS THAT ARE NOT NECESSARILY MADE OF SOLID MATERIALS. BARRIERS IN A SENSE ABOUT HEIGHT AND SCALE."



PHOTO: J. GARCIA
"A WALL IS A PERCEPTUAL BARRIERS THAT ARE NOT NECESSARILY MADE OF SOLID MATERIALS. BARRIERS IN A SENSE ABOUT HEIGHT AND SCALE."



WALL IS GAP WHAT IS WALL?

SURFACE GAP WALL IS GAP

FORM GAP THE IDEAL FORM

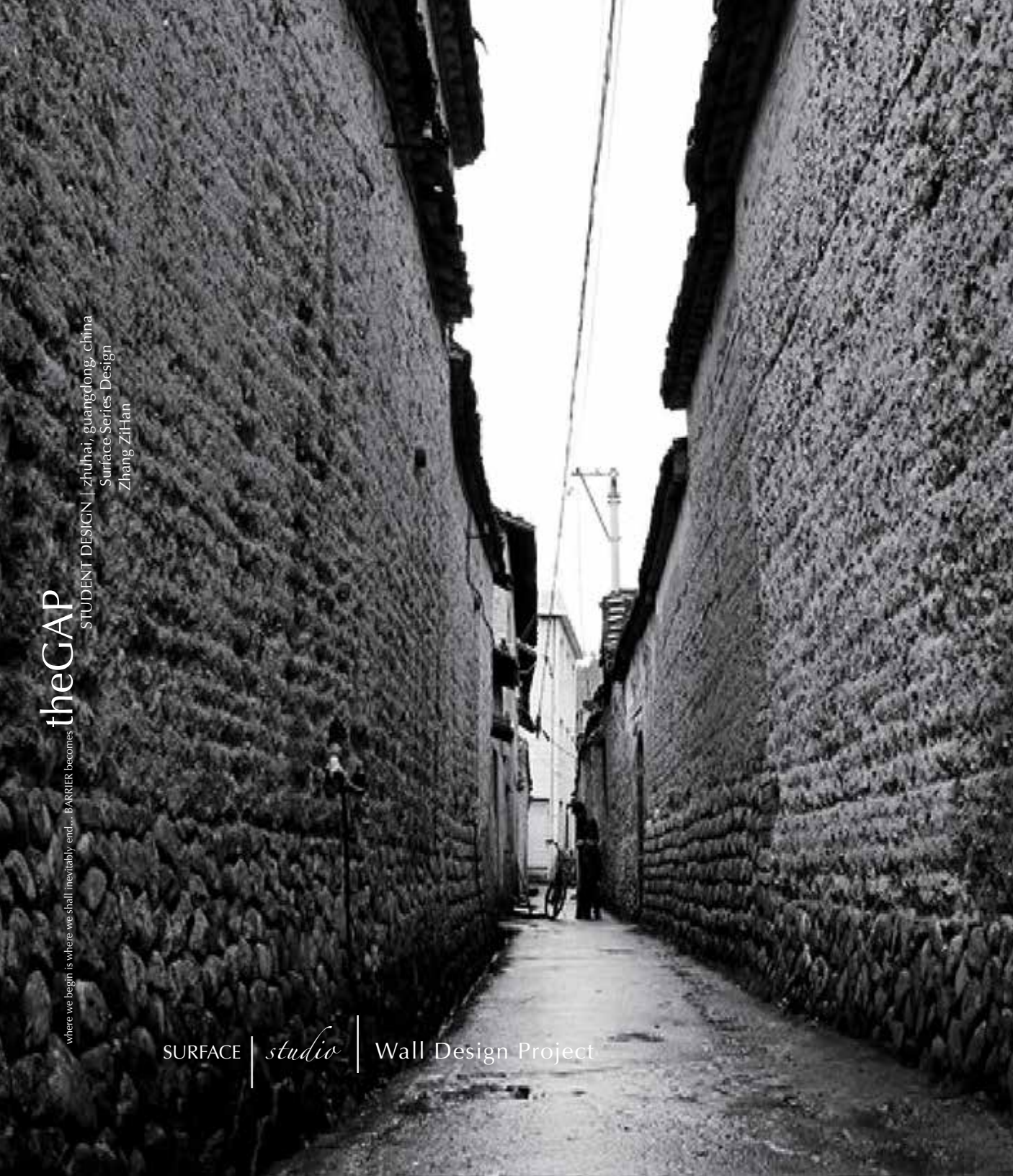
MATERIAL FIBER IDEAL GAP

ENERGY FLOWS IDEAL GAP

PHENOMENA AFFECT IDEAL GAP

SURFACE | studio | Wall Design Project

of SURFACE.



where we begin is where we shall inevitably end... BARRIER becomes
theGAP
STUDENT DESIGN | zhuhai, guangdong, china
Surface Series Design
Zhang ZHAn

SURFACE | studio | Wall Design Project



of SURFACE.



THOUGHT | BOUNDARY

In ancient China, the fence was built around the garden. The house and garden represent the Confucian culture and Taoist culture. Inside the wall, people enjoy the landscape and enjoy the life. The wall is the boundary of their life.



IDEA | CONNECTOR

The idea of the connector is to create a bridge between the two different spaces. The connector is a curved, translucent element that connects the two spaces. It is a bridge between the two spaces.



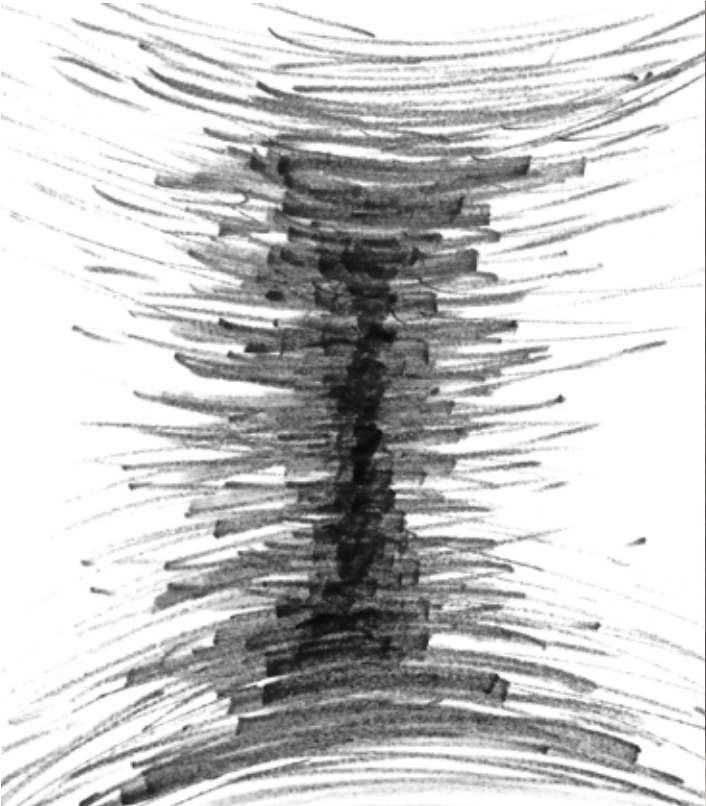
FORM | CONNECTOR

The form of the connector is a stack of rectangular blocks. The blocks are stacked in a way that creates a sense of depth and texture. The form is a stack of rectangular blocks.



MATERIAL | CONNECTOR

The material of the connector is a stack of rectangular blocks. The blocks are made of a material that is both strong and flexible. The material is a stack of rectangular blocks.



ENERGY | CONNECTOR

The energy of the connector is a stack of rectangular blocks. The blocks are arranged in a way that creates a sense of movement and energy. The energy is a stack of rectangular blocks.



PHENOMENA | CONNECTOR

The phenomena of the connector is a stack of rectangular blocks. The blocks are arranged in a way that creates a sense of depth and texture. The phenomena is a stack of rectangular blocks.





theCONNECTOR

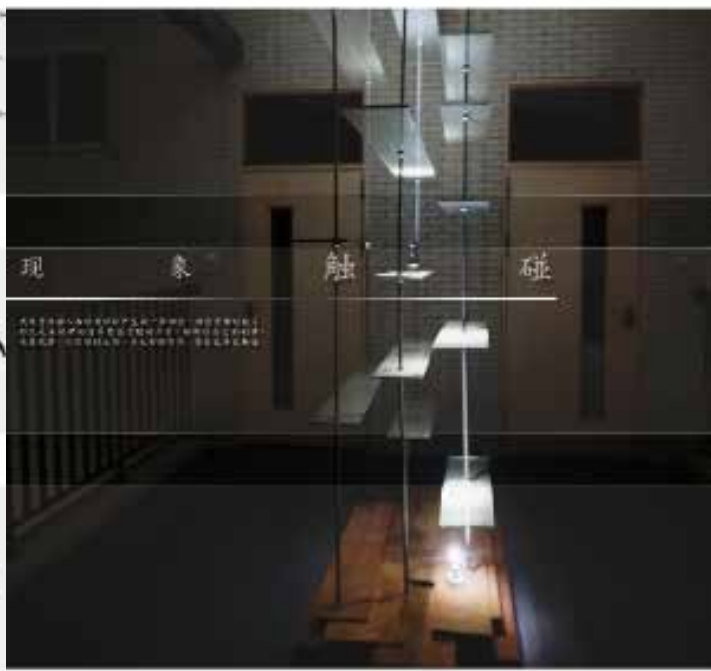
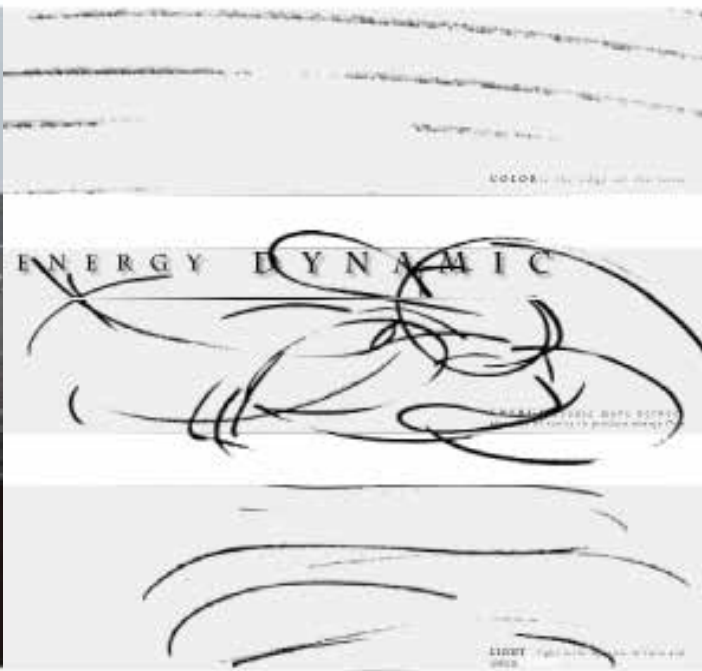
STUDENT DESIGN | zhuhai, guangdong, china
Surface Series Design
Guo Zengjie

where we begin is where we shall inevitably end... BOUNDARY becomes

SURFACE | *studio* | Wall Design Project



of SURFACE.



thesHADOW

STUDENT DESIGN | zhuhai, guangdong, china
Surface Series Design
Liang YunKang

where we begin is where we shall inevitably end... TOUCHING becomes

SURFACE | *studio* | Wall Design Project

of SURFACE.



WALL/ STACKING/ ELEMENT

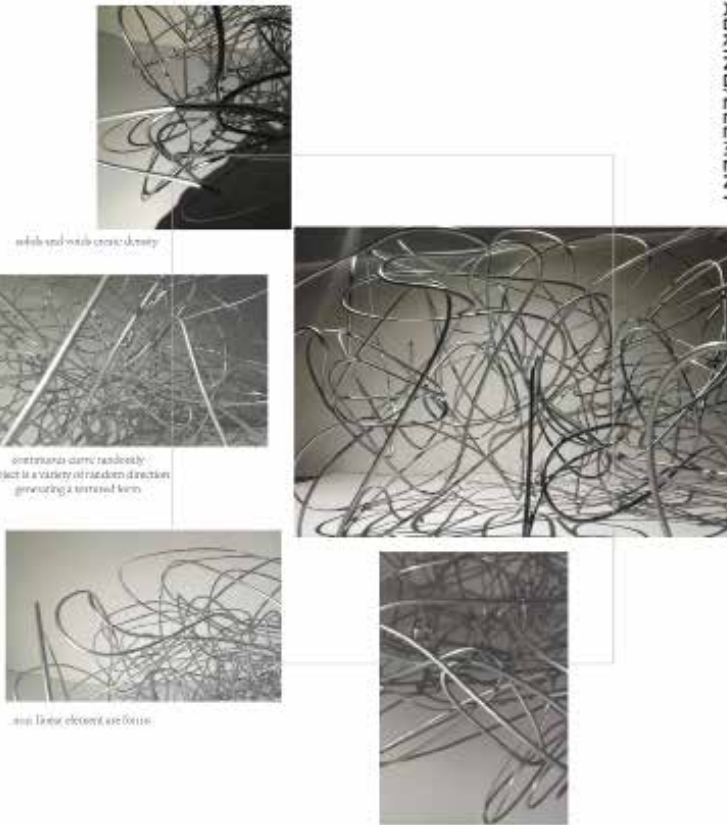


Wall can be composed of many elements to divide an area. The first thought is stacking. The texture is created by a variety of distinct elements. Elements are simple forms, continuous forms. Simple continuous form become layer textural form. Texture, element, quantity. They create a wall.

WALL/STACKING/ELEMENT



Many simple elements form which that divide actual and virtual space.



A simple forms that are placed to make complex forms that divide space. The idea form of element is gathering irregularly elements together.

WALL/STACKING/ELEMENT



powder is one of its dimension, steel powder is gray, when it formed block will have brown.

Powder and magnetic particles can form various shapes and after high temperature of smelting.

Hot reflective powder that can be formed into linear and non-linear forms. The essential nature of steel is a mixture of reflective powder with magnetic particles. The mixture only becomes or exhibit lightness in structure, color, mass as a liquid.

WALL/ STACKING/ ELEMENT



exaggerated

noise become wisdom and rising up to a point

irregularity of forms.

The vision is interrupted.

thickness don't blur from clear.

WALL/ STACKING/ ELEMENT

theELEMENT

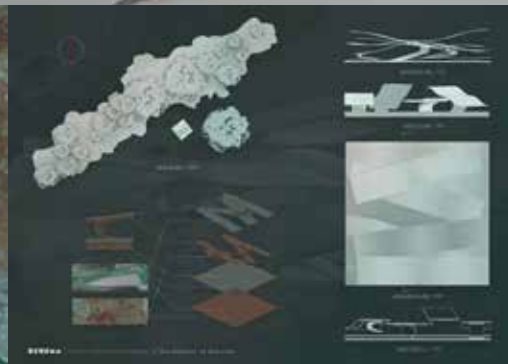
where we begin is where we shall inevitably end... STACK becomes
STUDENT DESIGN | zhuai, guangdong, china
Surface Series Design
Lin HuanHuan

SURFACE | *studio* | Wall Design Project

of SURFACE.

theRIVER

where we begin is where we shall inevitably end... NEWOPUS becomes
STUDENT DESIGN | zhuhai, guangdong, china
Surface Forms Design
Li ZhouLong





MAP
I have a thought regarding architecture.

IMAGE
Tree rings is a way of thinking about surroundings.

FORM
The form as determined is thus determined.

MATERIAL
The material has smooth surface and has strong hardness.

