



## I HAVE THOUGHTS REGARDING LANDFORMS.

SURFACEstudio...Hengqin Island Landscape Proposal was a design seeking to reveal the nature of HengQin Island which was being developed as a link between Zhuhai City and Macau.

“The Instrument” was a landscape design proposal presented to the local government Hengqin Island at the request of Zhuhai College of Jilin University Department of Architecture. The local government sought options for the design area along the central reservoir that flows through the entire development. The design of “The Instrument” proposes two long sinuous paths that move across both sides of the reservoir. Two paths emerge from thoughts about potential energies created by the development of Macau University and various business centers at the east end of the reservoir. The design continues to develop as a major and minor path generating the surfaces of three gardens. The three gardens – Meadow, Water, and Rock Garden – correspond to the three developmental areas – service, cultural and research district – proposed for the larger development. The two paths along with the three gardens comprise the primary functional elements of the design proposal.

The design of the paths and gardens are utilized the central reservoir and local water level fluctuations to generate surfaces that undulate vertically and horizontally. The fluctuations allow water to flow into the three gardens at various depths during the annual rainy season. Designed channels funnel water into the gardens generating a variety of potential experiences. The center garden (Water Garden) uses stone channels along with steel and wood pavilions to create a melodic path of light and water that would shelter occupants from harsh summer sun throughout the day. The melodic path was imagined a soft flowing path of planes that delicately move people vertically and horizontally while water moves beneath the surface into a plaza basin.

The idea of sponsoring the formation of the design is that the HengQin plateau is a potential instrument. The instrument is the formation of connected moments (planes) that flow softly vertically and horizontally. The corresponding moments are intended to be a melodic experience. The primary features of the design are the sinuous paths, three gardens, active water features through the reservoir, and multi-functional pavilions in each garden. Each garden emerges through the use of a specific material – meadow: flower and grass, water: stone and water, rock: rock and sand.

The design process of “The Instrument” exhibits the seven moments of design as imaged by Jason Bailey (writer, teacher, and architect) in Surface Studio at the Department of Architecture at Zhuhai College. The seven moments of design are used to reveal how initial (site analysis) design thoughts become meaningful made objects (surfaces we experience). The work will be used to assist student understanding and awareness of design thinking and making. The work is an expression of thoughts to be experienced by anyone who chooses to visit.

LANDFORMS are a sense of TRENCHES that exist as EDGES, NOISE & ENERGY that form potential moments of INSTRUMENT...

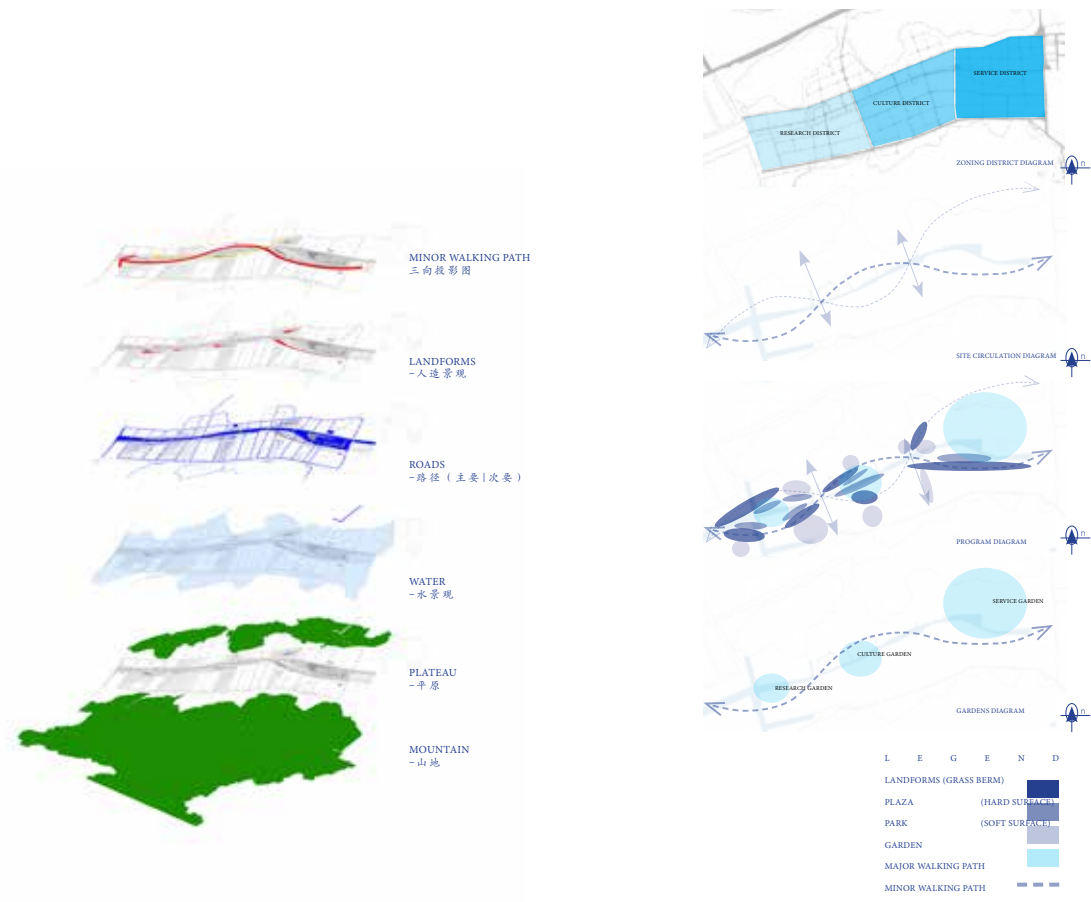


white rock | cherry blossom trees | grass

HengQin Island Landscape...

theINSTRUMENT

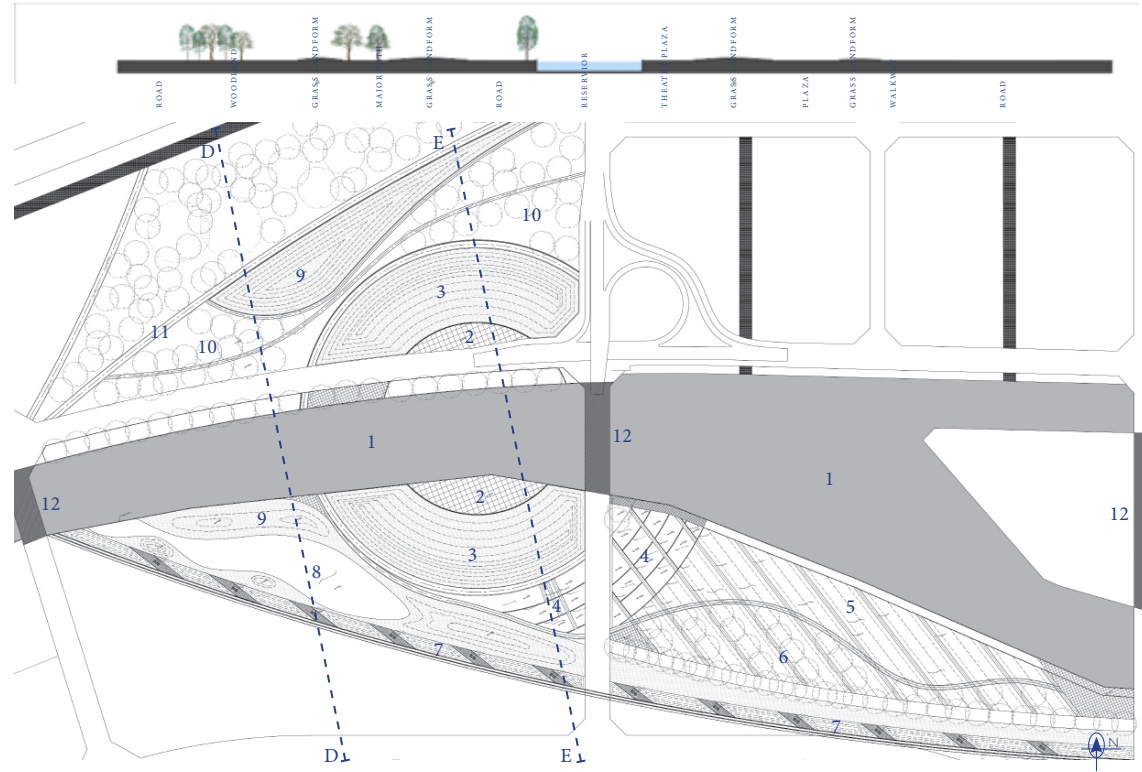
where we begin is where we shall inevitably end... LANDFORMS becomes



surfaceANALYSIS | LANDFORMS are a sense of PLANES that exist as ENERGY, DIRECTION & VOLUME that form potential moments of the INSTRUMENT...



HengQin Island Landscape...

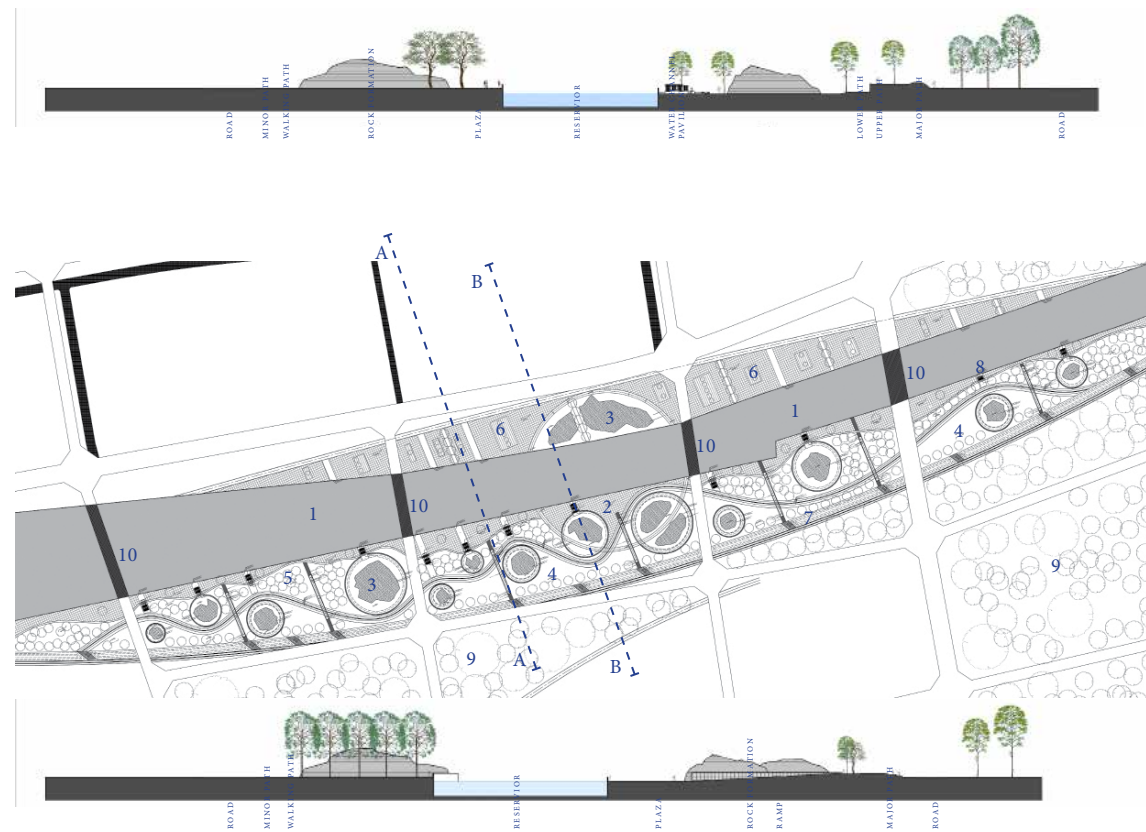


surfaceSCHEMA | Flow of energies about the site forming voids...



HengQin Island Landscape...

where we begin is where we shall inevitably end... LANDFORMS becomes the INSTRUMENT

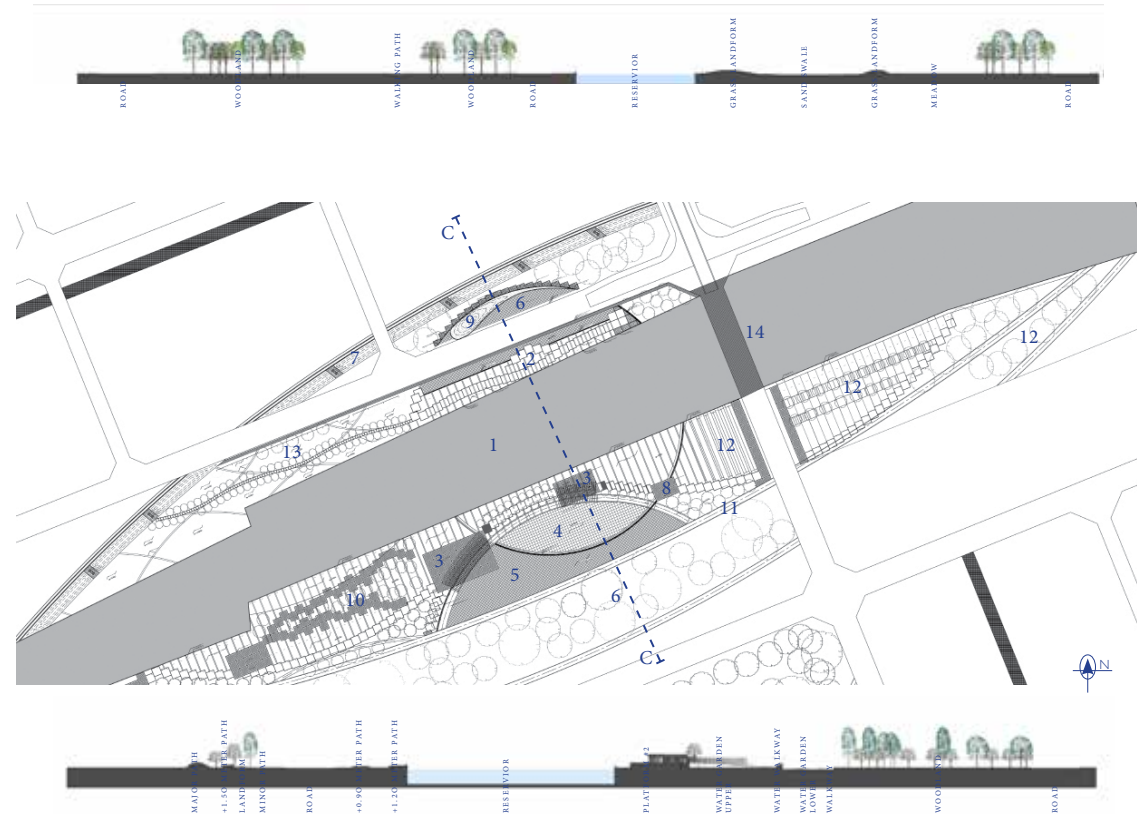


surfaceMODEL | THE INSTRUMENT is a way of thinking about LANDFORMS...

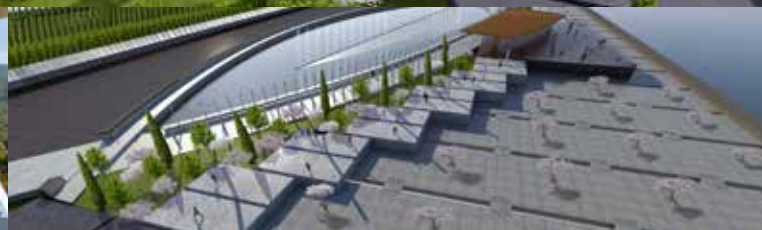


HengQin Island Landscape...

where we begin is where we shall inevitably end... LANDFORMS becomes theINSTRUMENT



surfaceAMBIANCE | Experience of the water garden from the north...



HengQin Island Landscape..

AMBIANCE | Surface view of the north pavilion | Surface view of the south pavilion...

where we begin is where we shall inevitably end... LANDFORMS becomes  
theINSTRUMENT  
Hengqin Island Landscape Design Proposal 2013 | zhuhai, china



HengQin Island Landscape...