



PHENOMENA | culture center VIEW FROM THE NORTHWEST
the phenomena as experienced... form

MARRAKECH CULTURAL CENTER
مشكركم على ما جعلناة ندم ل

ESSENCE | FABRIC... the place, Morocco is a confluence of dense textures. **شكارم**

The LOOM

The primary thought sponsoring this work is Morocco is a topography that reveals a cultural fabric. Thus this work suggests that the essence of Morocco is a dense fabric composed of a variety of patches.

The conceptualization of Surface

TOPOGRAPHY

Densities are particular arrangements of elements forming a tapestry of phenomena recognized as spatial form. Form occurs on multiples levels. The first level design consists of the cities being patches of form. The second noticeable level is the city level within their walled city (Medina) forms inside which objects are irregular.

FABRIC... the essence

An oasis is an organic 'patch' that draws inward the energy of a desolate topography. Once brought forth diverse collection as such becomes a recumbent form as if a 'cultural fabric' of dense strands (textures). The textures as experienced become more as they are continually stitched and restitched in time. From this becomes a cultural oasis along the edge of the Lalla Takerkoust (lake). The oasis is the site within which the Moroccan energy is captured and flows thru a blend of artful volumes. Light permeates through rhythmic tones of red (MARRAKECH RED CITY - شكارم عارم جلا قني دم ل) and indigo (Mecca, the site of the spirit).

Surfaces are natural occurrences continually becoming a matter of cultural erosion. The enduring occurrence formed is a topography. Morocco is an organic situation crafted of densities, forms, and flows. The essence of Morocco is a cultural 'fabric' continually formed, reformed, and eroded. That which becomes a tapestry of spatial strands is a composition of patches or situational moments. The moments within the fabric of Morocco are divergent cityscapes. These cityscapes locate the colorful historic nature of Moroccan civilization. The patch-work of cities as identified are essential to the composition of this place.

CONDITIONS | PATCH...the phenomena, of colored cities stitched as if to patch time....

EROSION

Contextual Erosion as the processes and residual accumulations of force (what) affecting existing spatial forms.

PATCH...the phenomena that are.

The local phenomenon within the fabric of Morocco is the strand of patches or cities. The patches exist as sites of cultural erosion. The cities of Morocco compose a series of moments that collectively mark the spirit of Morocco. The patches (cities) share common notions regarding religion, food, clothing, language, art, poetry, music, and architecture evoking a sense of place.

The cultural 'erosion' that exists within is actions or forces that affect spatial form. What are spatial objects? Objects are any or all of the given cultural artifacts that litter the topographical fabric of Moroccan cities such as Rabat, Fez, Casablanca, Agadir, Essaouira, Chefchaouen, and Marrakech. These cities are collections of tone and textural fibers continually re-crafting a spatial continuum. The finely crafted patchwork sorts and re-orders how cultural forms meander as harmonious artifacts.

FORMS | LOOM... the object, becomes tool from within which culture becomes more.

ARTIFACTS

material formations emerge from cultural actions of force that encourage/inspire indeterminate energies to reveal contextual contours

LOOM... the object becomes.

The loom herein is an artifact that binds divergent strands of culture into a harmonious labyrinth of colored surfaces blending artful volumes permeated by rhythm tones. Once formed, simple forms, volume, colors, and textures shall exit as a derivation of the Amazigh or Berber looms that form new strands.

The loom is an architectural artifact that is a sensitive response to the fabric that is Morocco. This form becomes form within this place via the physical emergence of simple linear forms occupied by volumes. The rammed earth wall (local building technique) forms a series of layered voids generating a labyrinth-like quality of flow. The primary void of the object is a great void that is a continuous water garden. The garden is awash with natural light via three openings of light that permeate the linear mass. Within this blend of artful volumes, Moroccan Beldi Zellij patterned tiles respond to and are influenced by Mecca (blue-based tiles) and Marrakech (red-based tiles).

The color and tone of this cultural artifact reveal a sense of place, Marrakech embodied by the Cultural Center Marrakech. That which is a sensible response to the beauty of Morocco is an ambient form.

THE CONCEPTUALIZATION OF SURFACE... **fabric**

ESSENCE | FABRIC... the place, Morocco is a confluence of dense textures. **شكارم**



CONDITIONS | PATCH...the phenomena, of colored cities stitched as if to patch time...



FORMS | LOOM... the object, becomes tool from within which culture becomes more.



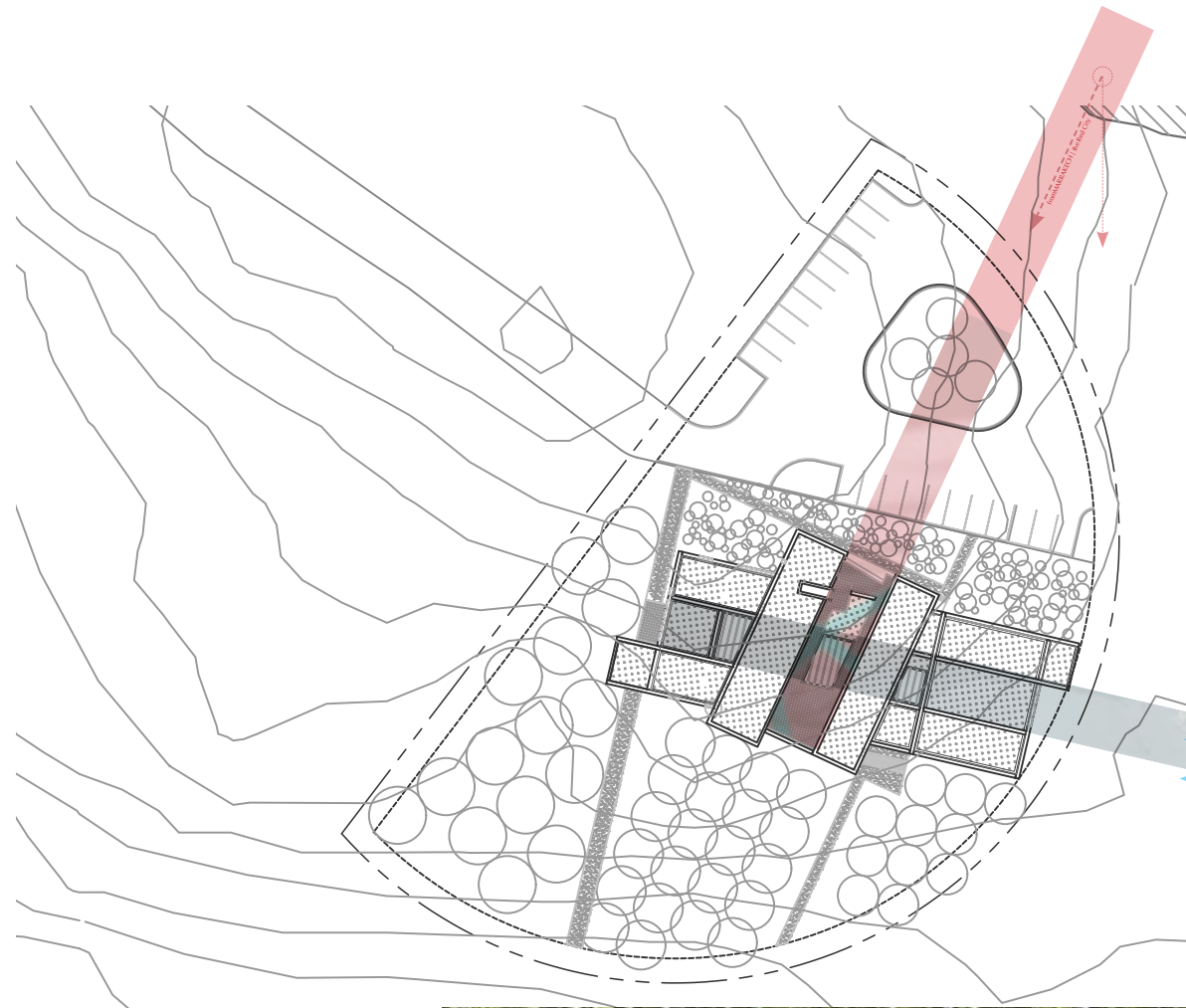
the conceptualization of surface | The fabric of Morocco is a topography...



ambiance | FABRIC is a sense of STITCHING that exist as COLOR, LIGHT and EDGE which form potential moments of the LOOM...

MARRAKECH CULTURAL CENTER

شكارم ءارم حل اة نيدم ل

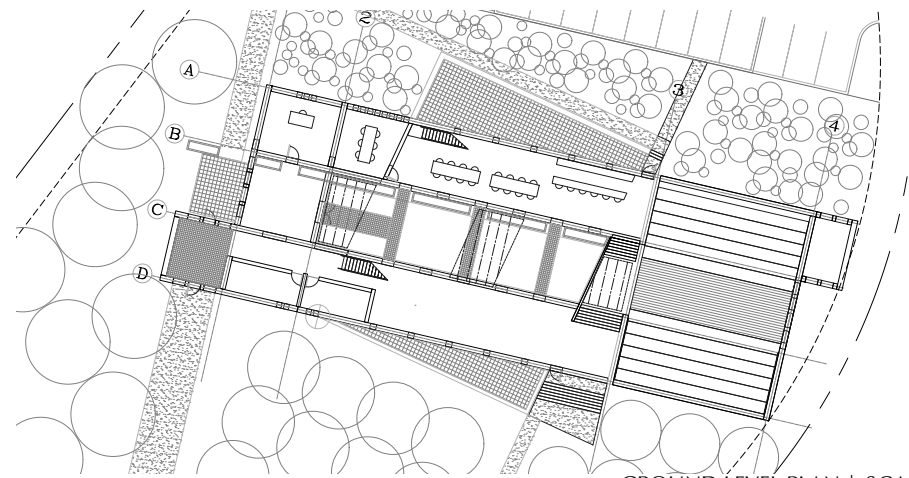


identificationsCOLLECTION | the LOOM is a object that binds divergent strands of cultures into one harmonious tapestry of lightness...

IDENTIFY | Morocco is a vast efferecent FABRIC..
IDENTITY | cultural fabric continually stitched in time... PATCH
IDENTIFICATION | that which binds all strands into textural beauty, LOOM..

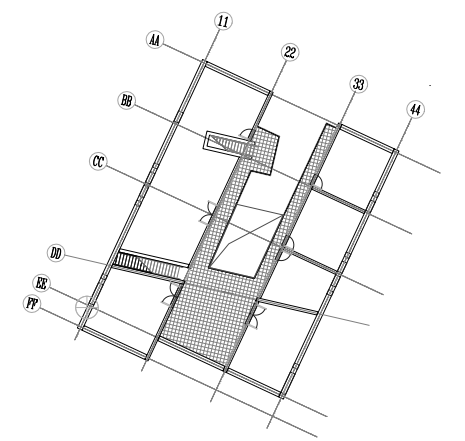


MARRAKECH CULTURAL CENTER
شركارم ءارم حلا ةني دم ل



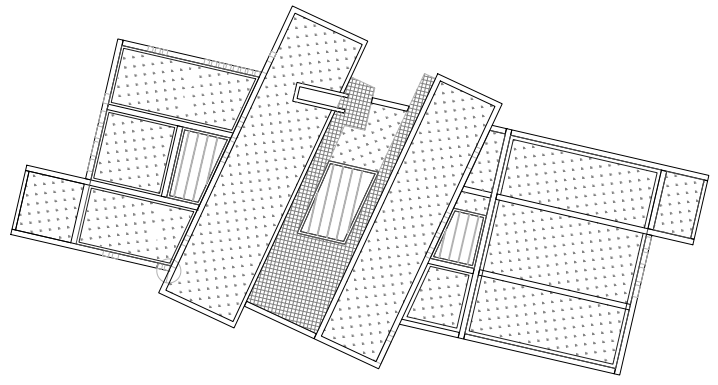
- LEGEND (GROUND)
1. ENTRY
 2. OFFICE
 3. MEETING ROOM
 4. EXHIBITION
 5. RESTAURANT
 6. WATER GARDEN
 7. THEATRE
 8. TOILET M
 9. TOILET W
 10. MECHANICAL
 11. TERRACE

GROUND LEVEL PLAN | SCALE 4:1



- LEGEND (UPPER)
1. MEDIATHEQUE
 2. STUDIO ONE
 3. STUDIO TWO
 4. STUDIO THREE
 5. MUSIC CONSERVATORY
 6. TERRACE

UPPER LEVEL PLAN | SCALE 4:1



ROOF LEVEL PLAN | SCALE 4:1

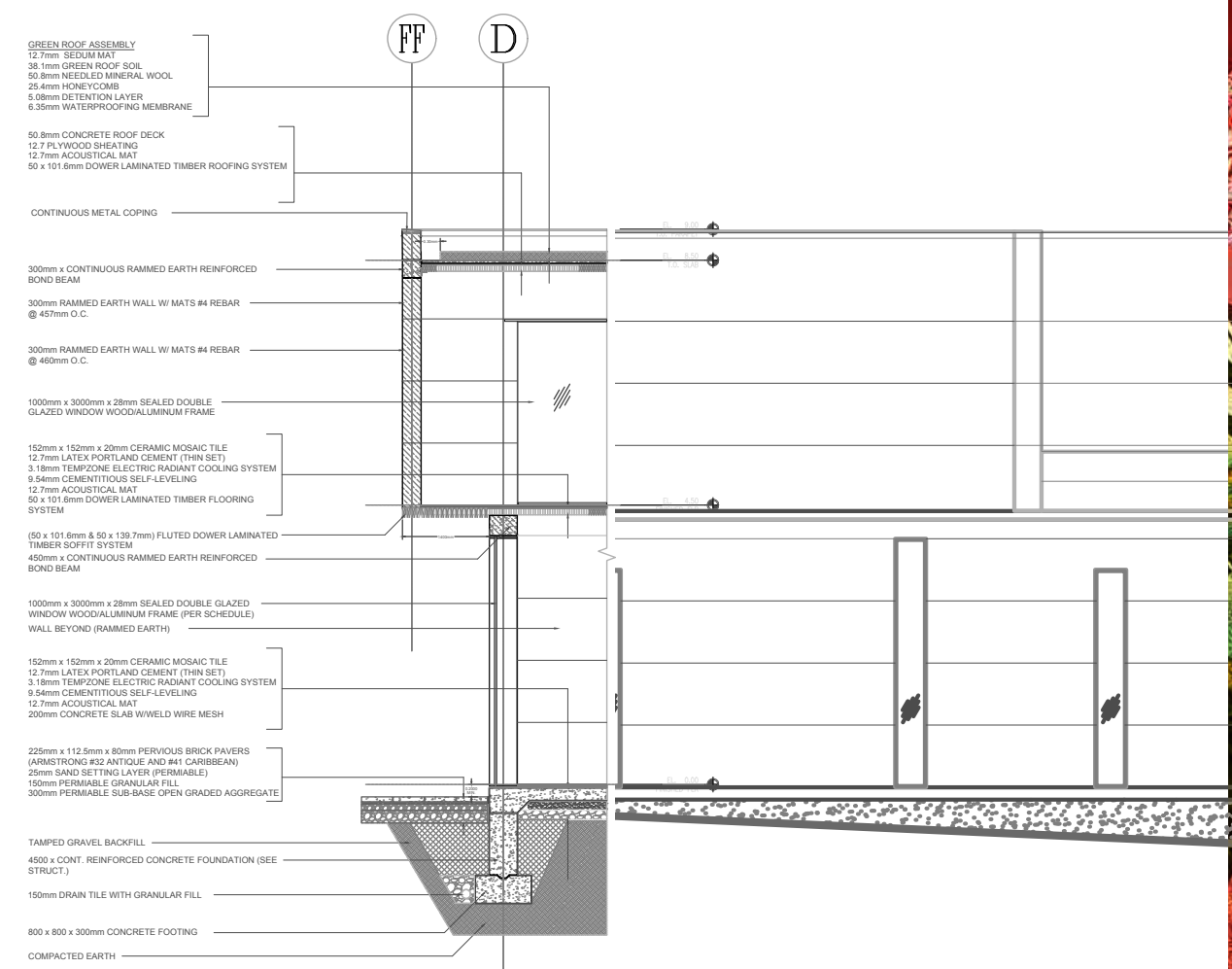


IDEALform | the form as imagined is a blend of artful volumes...

the phenomena as experienced | form, volume, color & texture



MARRAKECH CULTURAL CENTER
شركارم ءارم حلا ةني دمل



WALL SECTION | SOUTH ELEVATION NTS



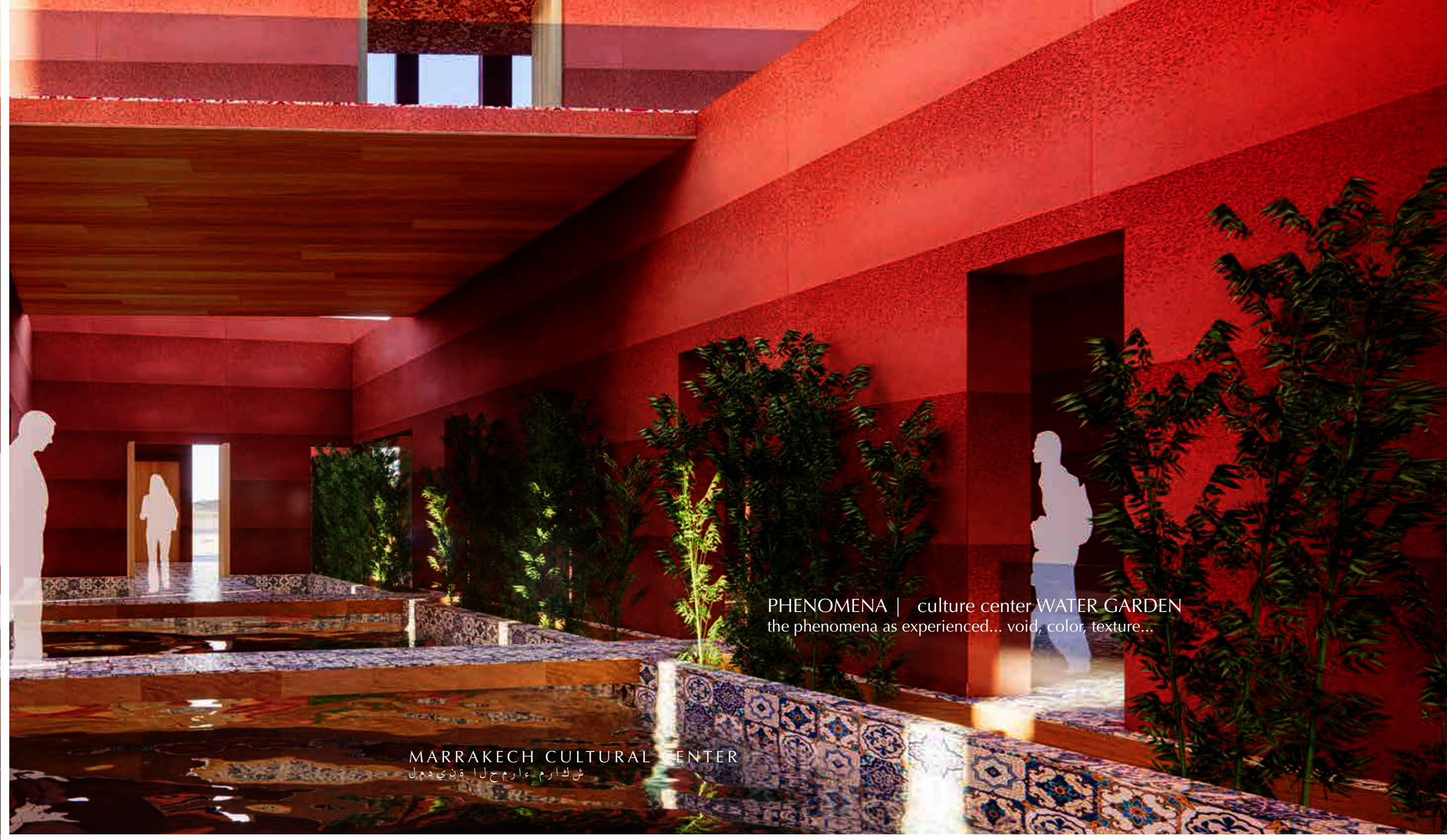
PHENOMENA | culture center VIEW FROM THE NORTHWEST
the phenomena as experienced... form

MARRAKECH CULTURAL CENTER
شركارم عارم حلالا ننيادم

theLOOM
COMPETITION PROPOSAL 2021 | marrakech, morocco
مراكش، المغرب | مركز الثقافي

where we begin is where we shall inevitably end... FABRIC becomes

SURFACE | studio



PHENOMENA | culture center WATER GARDEN
the phenomena as experienced... void, color, texture...

MARRAKECH CULTURAL CENTER
شركاء ارام حل ا قني دم ل