

where we begin is where we shall inevitably end... GROVES become  
**theLANTERN**  
INSTALLATION 2022 | Zhongshan, Zuhai, China



THE CONCEPTUALIZATION OF SURFACE... **trail**

theLANTERN

Zhongshan, Zhuhai, China

where we begin is where we shall inevitably end... GROVES become



Notes On Site

Zhuhai, China

Site Dimensions	11.0m x 11.0m (circle)
Gross Lot Area	121 sm
Net Lot Area	121 sm
FAR Floor Area Ration	1.0
Lot Coverage (building)	100%
Buildable Area	100% of 121 sm
Open Space Requirement	10% of 121sm
Gross Building Area	121 sm
Maximum Building Height	10 meters
Maximum Building Floors	1 floor

Site Temperature Range (High/ Low)	July 28.4C / January 13.3C
Windiest Month	March 10km average
Average Humidity	83%
Prevailing Winds (Maximum)	Eastern
Rainfall (Yearly Average)	1738 mm
Sun Angles (Summer/Winter)	80.37° south summer/ 42.99° east winter
Local Environmental Catastrophies	Typhoons
Shadow Length	0.13m summer/ 1.03m winter
Climate	Subtropical Monsoon
Population	27,147 (2021 Zhongshan)



conditions | aerial image forces | light, sound, texture

| Zhongshan.



PLACE | TRAIL, the imaginary garden is an undulating surface of textures, light and light waves.

The Imaginary Garden of Zhongshan is a quiet respite from the hustle of Guangdong Province cities such as Shenzhen and Guangzhou. The garden is composed of a tea house other designed forms scattered about the camping terrain of ways. The primary object of the site is a hiking trail. This walkable surface allows patrons to roam about the setting of water, stippled light, and natural sounds.

The trial is a cultural intervention that acts as a unifying element. The path of rivers rocks marks the landscape as its undulating contours sculpting spatial events within. This trail allows visitors to meander along uneven ways creeping next to the river and lake banks. Sheathed with black granite rock trails form lakes, tea houses, campgrounds, and mini gardens of the imaginary.

The insignificant trail touches and is touched by all



PLACE | GRANITE RIVER ROCK...the cultural artifact scattered about to guide.

The rock is marked. The rock is a marker. The simple rock is deposited deliberately throughout the landscape. The rock was a part of the river. The rock has become a newly formed river.

The black granite river rock has been placed in the garden to reform the landscape. The river rock is the landscape that is not experienced. These granite objects allow humans to wander about just as the river wanders beneath. The rock has become a tactile surface of visual tones. This form of cultural erosion was created to temper the steps generating moments. The garden is a place of light and sound beneath and above. In between the phenomenal of river rock situates the terrain so that energy may wander as if not to know it exist not to mark.



THE CONCEPTUALIZATION OF SURFACE... trail

PLACE | THELANTERN... The beacon of snatching energy from nature.

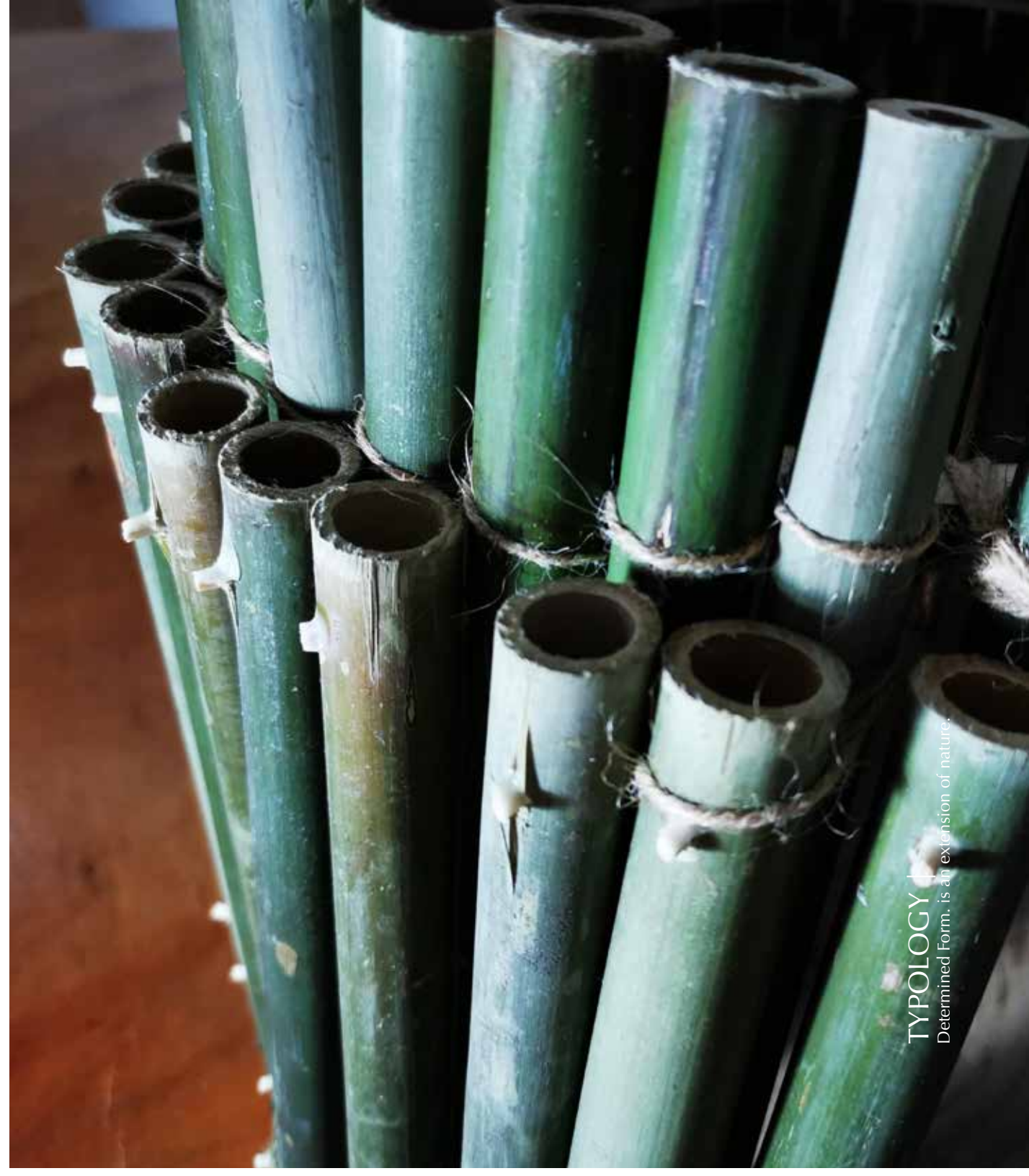
I have a thought regarding paths. The lantern is a way of thinking (idea) about the trail. The lantern is a beacon of texture and light. The form is a simple truncated entity composed of repetitive forms and isolated voids. The top of the pavilion is an inter-woven oculus (void) exposing a moonlit sky beyond. This experience evokes a sensation of light shifting through a speckled canopy of color, texture, and light by day. The circular volume beneath is a surface formed of irregular voids exposing forms and flows (nature). The lantern is the setting of natural elements (trees, light, sounds, breezes) to be sensed as the surrounding textures and lights flow along the path.

where we begin is where we shall inevitably end... GROVES become  
the LANTERN  
Zhongshan, Zhuhai, China

**TPOLOGY** |  
Potential Form. the lantern is a beacon of light snatching nature.  
The Lantern is a way of thinking (idea) about trails.



**TPOLOGY** |  
Ideal Form. is a series of radiating surface voids.



**TPOLOGY** |  
Determined Form. is an extension of nature.

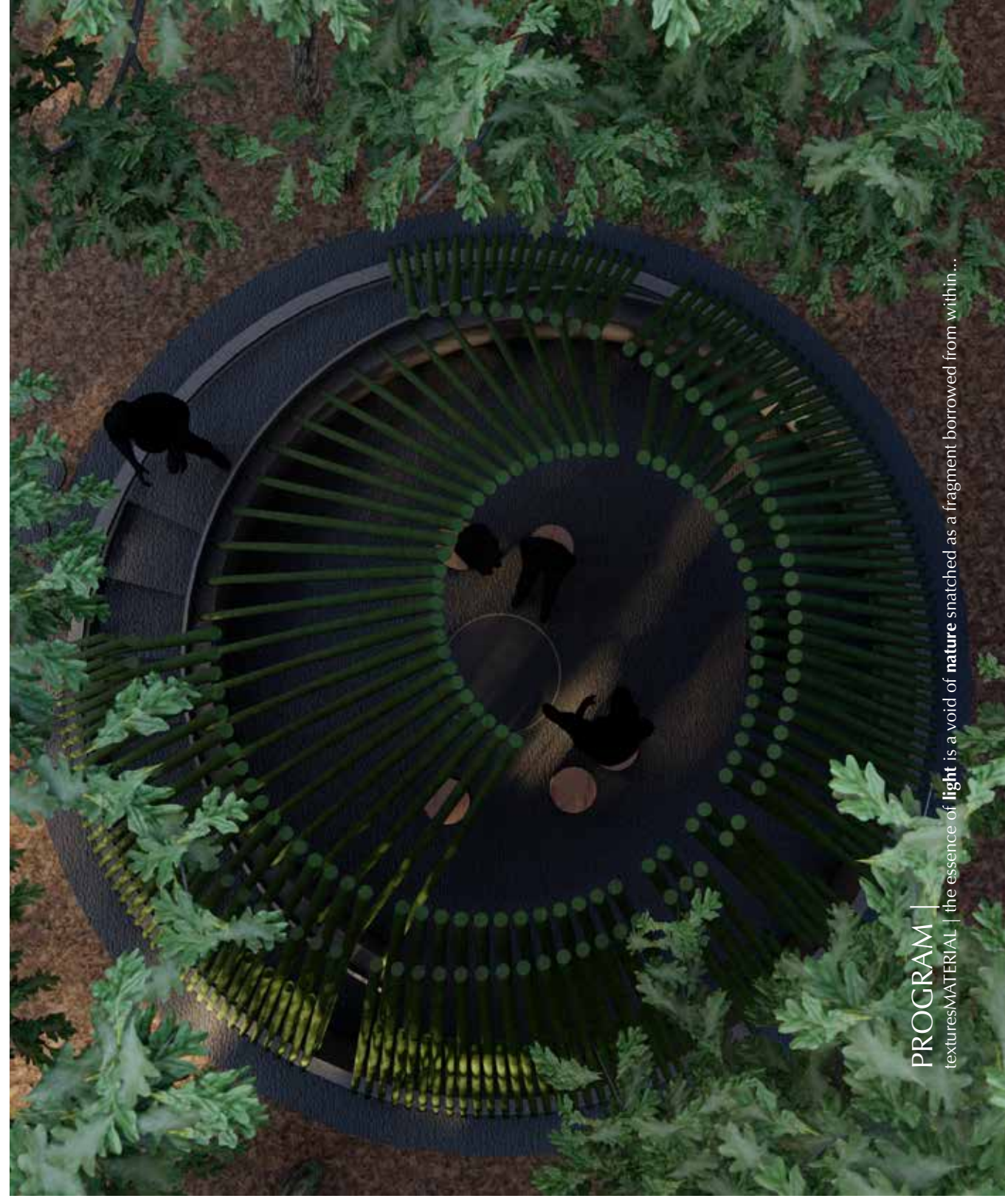
where we begin is where we shall inevitably end... GROVES become

# the LANTERN

Zhongshan, Zhuhai, China



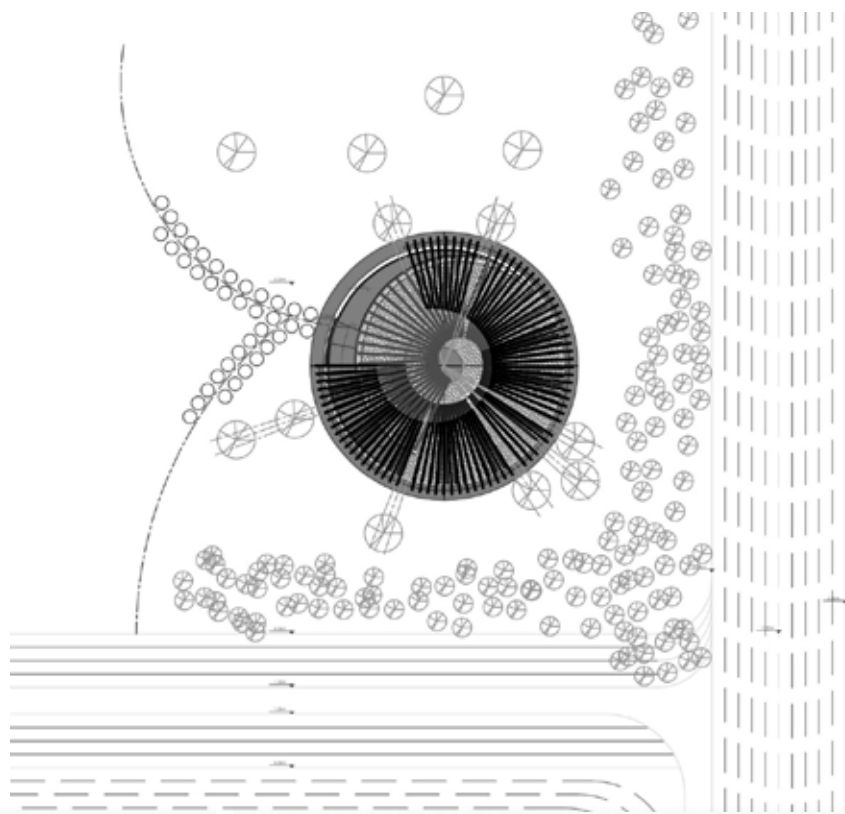
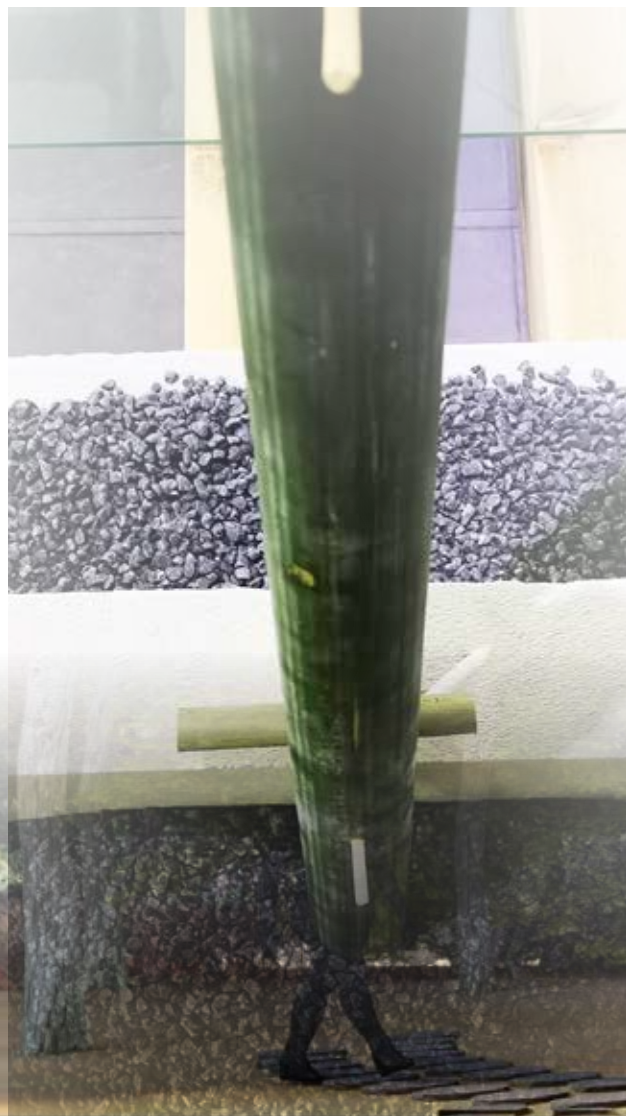
**PROGRAM |**  
texturesMATERIAL | the essence of bamboo is a dense cellulose structure that generates a repetitive knot.  
texturesMATERIAL | the essence of granite is coarse grain forming a tactile texture...



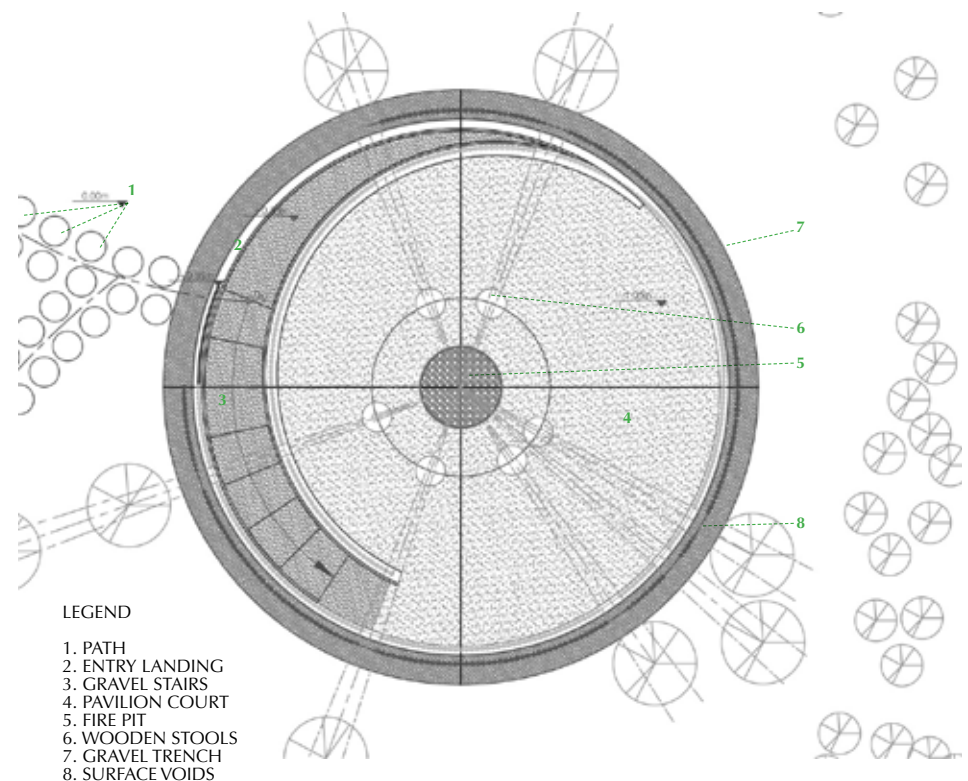
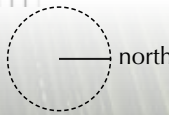
**PROGRAM |**  
texturesMATERIAL | the essence of light is a void of nature snatched as a fragment borrowed from within...



**PROGRAM |**  
AMBIENT FORM | The lantern is a way of thinking (idea) about the trail.  
The lantern is a beacon of texture and light. The form is a simple truncated entity composed of repetitive forms and isolated voids. The top of the pavilion is an interwoven oculus (void) exposing a moonlit sky beyond. This experience evokes a sensation of light filtering through a specific canopy of color, texture, and light by day. The circular volume beneath is a surface formed of irregular voids exposing forms and flows (nature).



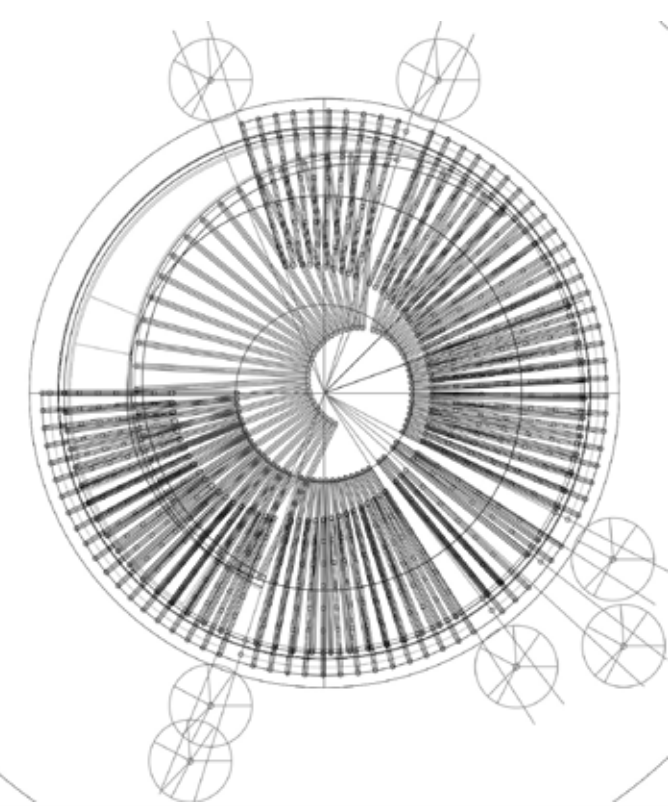
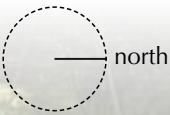
Site Plan | Scale NTS



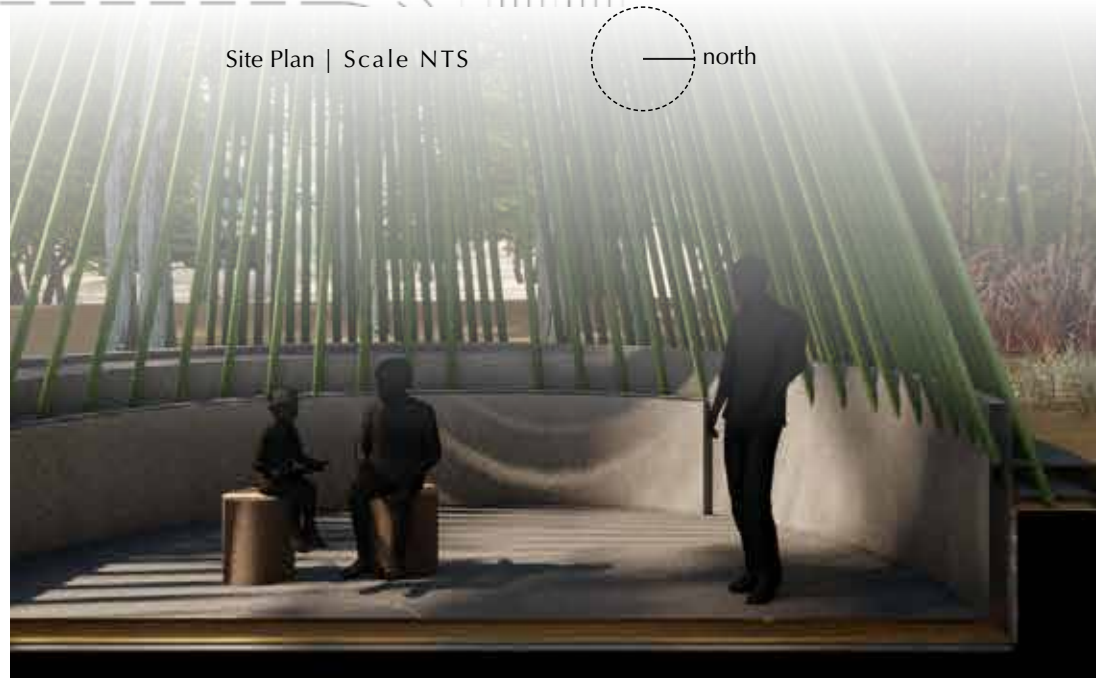
LEGEND

- 1. PATH
- 2. ENTRY LANDING
- 3. GRAVEL STAIRS
- 4. PAVILION COURT
- 5. FIRE PIT
- 6. WOODEN STOOLS
- 7. GRAVEL TRENCH
- 8. SURFACE VOIDS

Ground Level Plan | Scale NTS



Model Plan | Scale NTS



the LANTERN

Zhongshan, Zhuhai, China

where we begin is where we shall inevitably end... GROVES become

PROGRAM |

AMBIENT FORM | The circular volume beneath is a surface formed of irregular voids

ZHONGSHAN Imaginary Garden Pavilion  
design strategies | form, repetition, volume & void