



theLOTUS

where we begin to value the spatial inevitability and... FIELDS becomes
Bailian Residential Design Proposal 2015 | zhuhai, china



Bailian NewTown Residential Lofts

I HAVE THOUGHTS REGARDING FIELDS

SURFACEstudio... Bailian Residential Lofts Design was a design proposal seeking to introduce a simple elegant form that emerged from the land like a water lily from mud.

The Bailian Residential Lofts would become a LOTUS are a way of thinking (idea) about FIELDS. A LOTUS is a soft (texture) horizontal plane form which the building form emerges. The singular colored (white) plane becomes a lightly textured linear FORM of the residential lofts. The simple FORM opens allowing the energy of bodies to flow thru the interior garden void. Bodies flow about the openings creating a texture of light. The forms beget volumes (forms) that are softly lit capturing and releasing energy or moments from which memories are formed. The LOTUS is a simple form that becomes, then becomes no more...

The lotus is a SOFT WHITE FORM OF LIGHT...

Within the residential lofts, the volume is maximized by generating double height environments. The volumes are extended horizontal via a continuous balcony that allows residents to exchange energy. The lotus form becomes more than a collection of isolated dwelling units. The Lotus is a landscape from which architecture expands. The primary experience of the Lotus is the land from that forms the interior and exterior gardens. The interior garden being only three meters in width is conditioned with light reflecting deeply off of vertical surfaces to an undulating path below. The exterior garden to the rear locates a linear form landscaped with lush white magnolia trees in succession upon a plan of crisp green grasses. Residents will flow thru the white trees that reinforce the feeling of calm via paths of textured white and grey paving stones.

The Lotus will mark the beginning of the redevelopment of the Xiangzhou District by becoming of beacon of lightness. The continuum of color beginning with the ground marks the use of white sandstone wall surfaces of the exterior form of the lofts. The soft white stones delicately patterned with a light texture will reflect and well as absorbing the energy of the surrounding environment. The white stones will combine with a natural brown toned wood for interior flooring and all surrounding detailing.

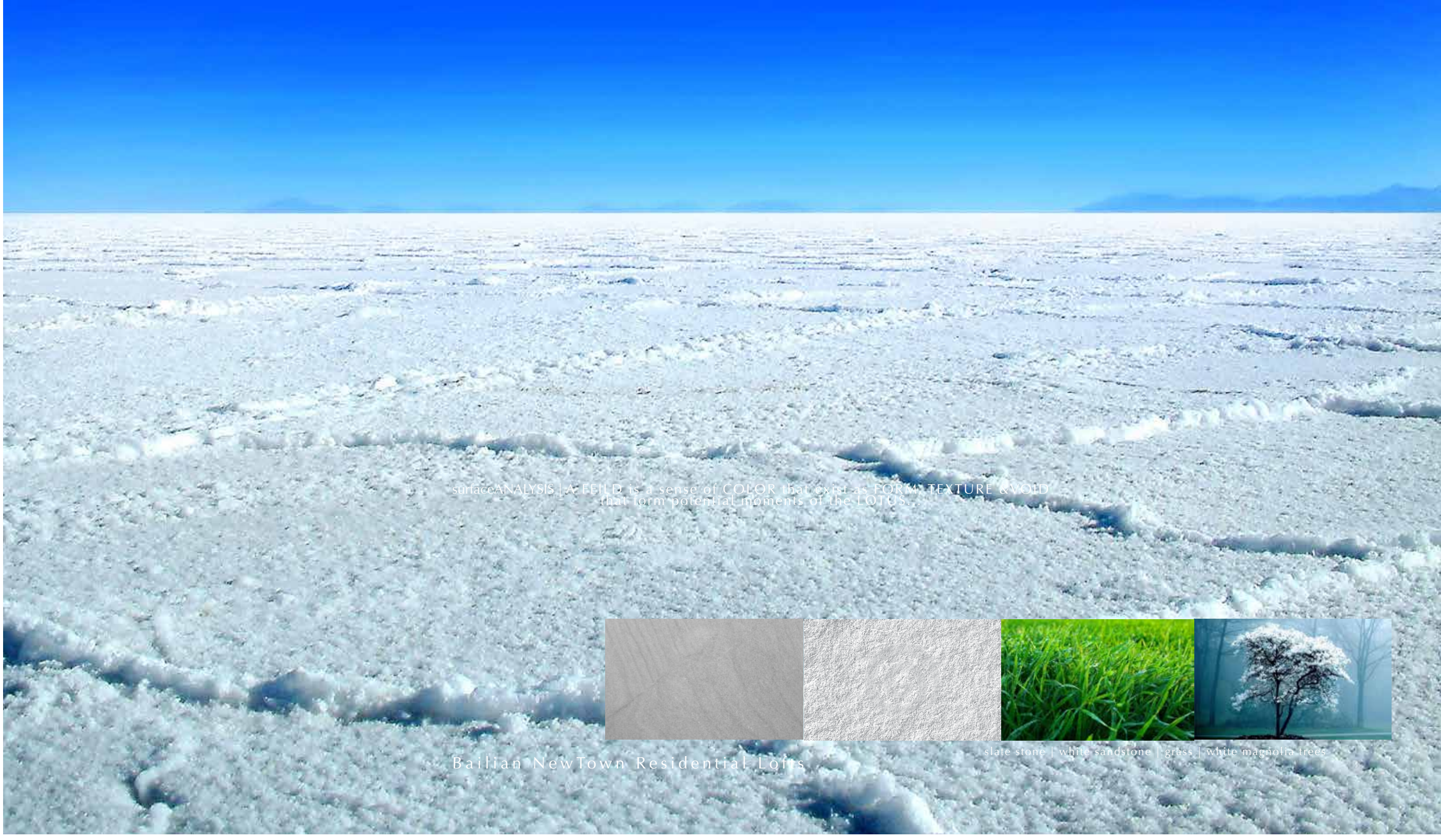
FIELD is a sense of LIGHT that exist as COLOR, LIGHT & EDGES that form potential moments of THE LOTUS...



Bailian NewTown Residential Lofts

theLOTUS

where we begin is where we shall inevitably end... FIELDS becomes

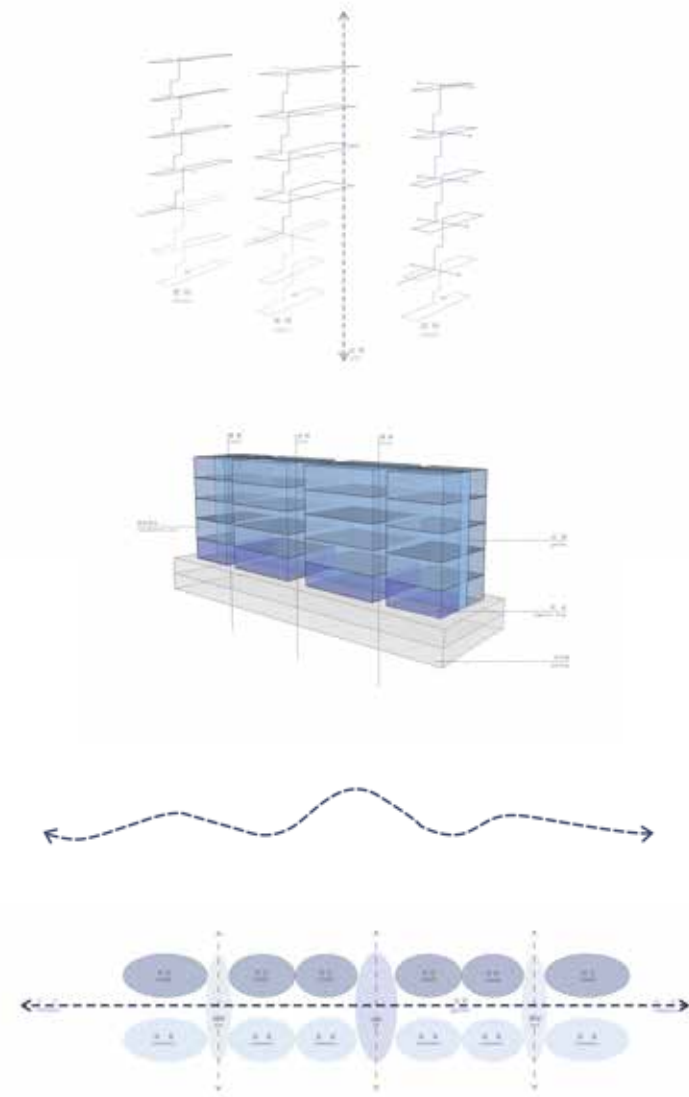


surfaceANALYSIS | A FIELD is a sense of COLOR that exist as FORM, TEXTURE & VOID that form potential moments of the LOTUS...



slate stone | white sandstone | grass | white magnolia trees

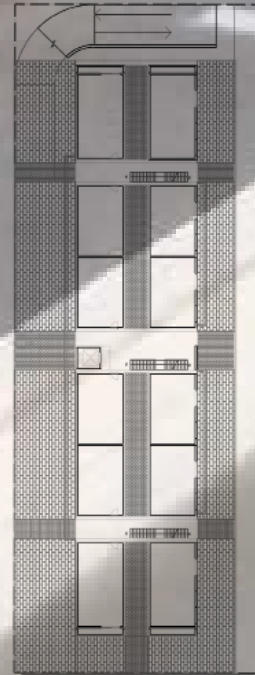
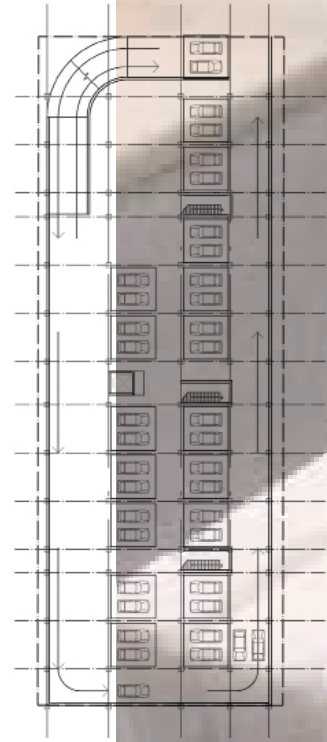
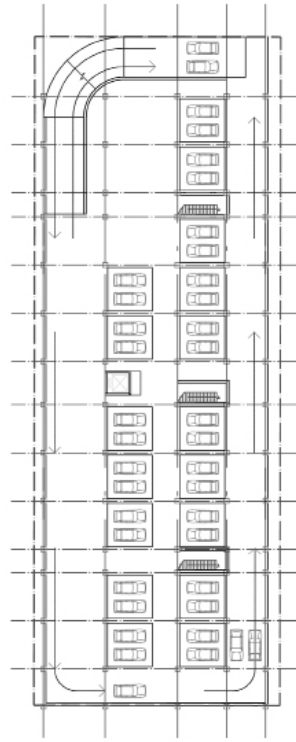
Bailian NewTown Residential Lofts



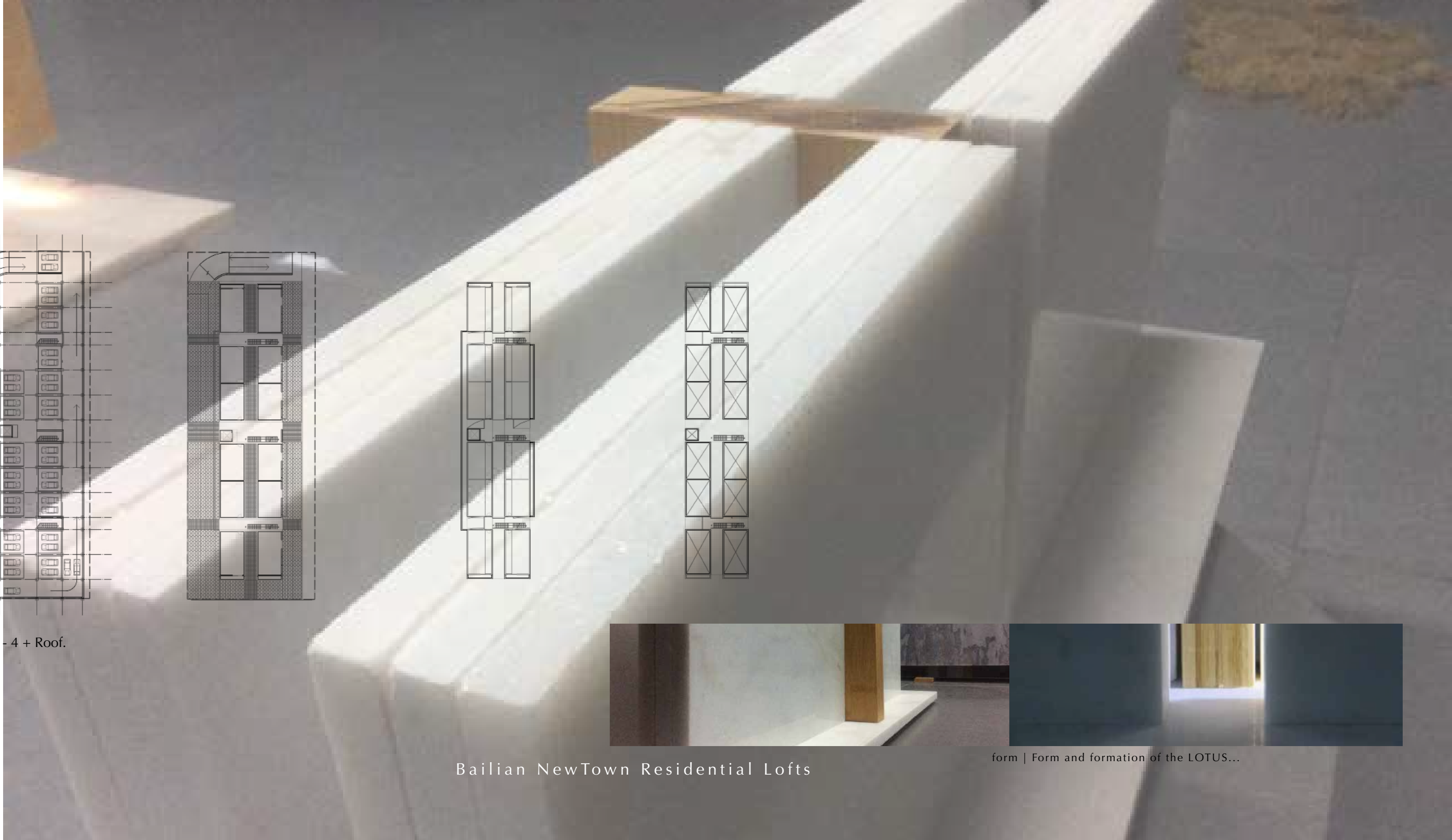
IDEALform | The form as imagined is a soft white form of light and voids...

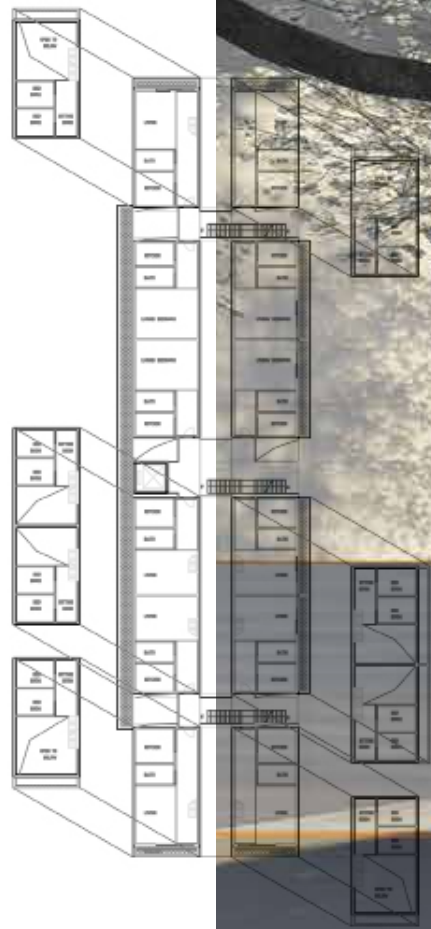
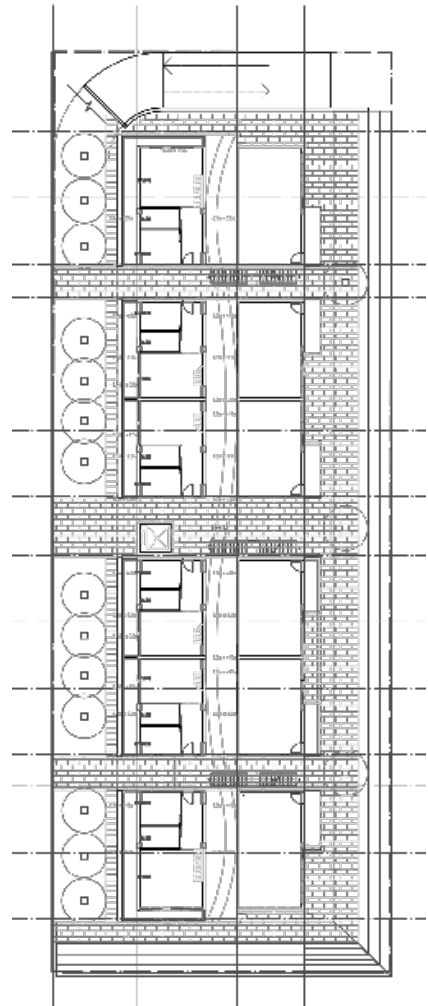
Bailian NewTown Residential Lofts





surfaceSCHEMA | Building plans levels 1- 4 + Roof.





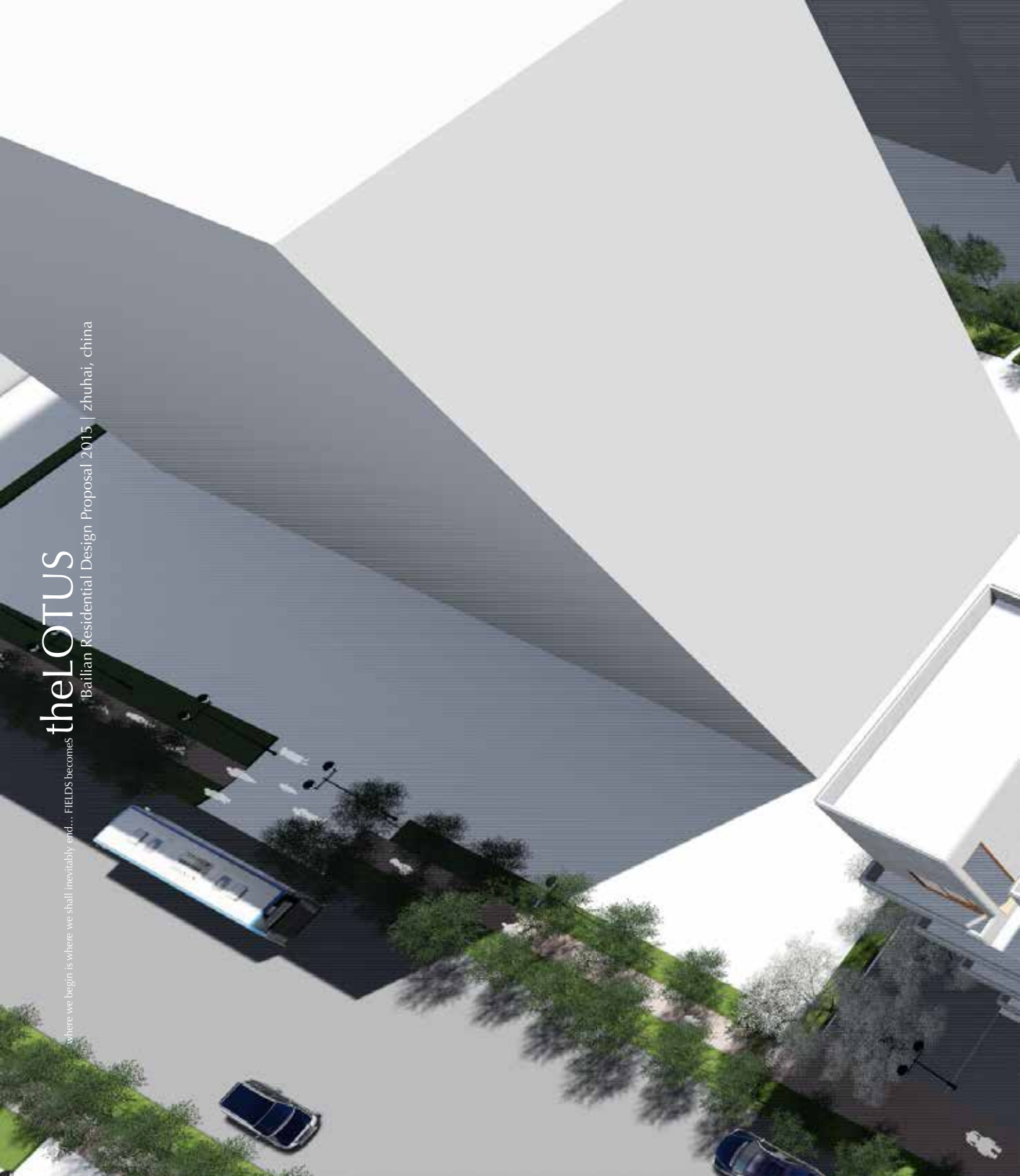
surfaceAMBIANCE | Experience of the entry into the void of light...

Bailian NewTown Residential Lofts

AMBIANCE | View into center void | Surface level view of the form...

theLOTUS

where we begin is where we shall inevitably end... FIELDS becomes
Bailian Residential Design Proposal 2013 | zhuhai, china



Bailian NewTown Residential L...