



EXPLANION. is the rhythm wandering from the Bantu wellspring...



PLACE | identificationIMAGE

SPREADING. the gradual expanse of the Bantu genoe thoughtout the Sub-Saharan terrain...

(image. An early painting of the first migration of the Fengu, one of the affected peoples of the Mfecane 1840)





image | Mibila (marimba)

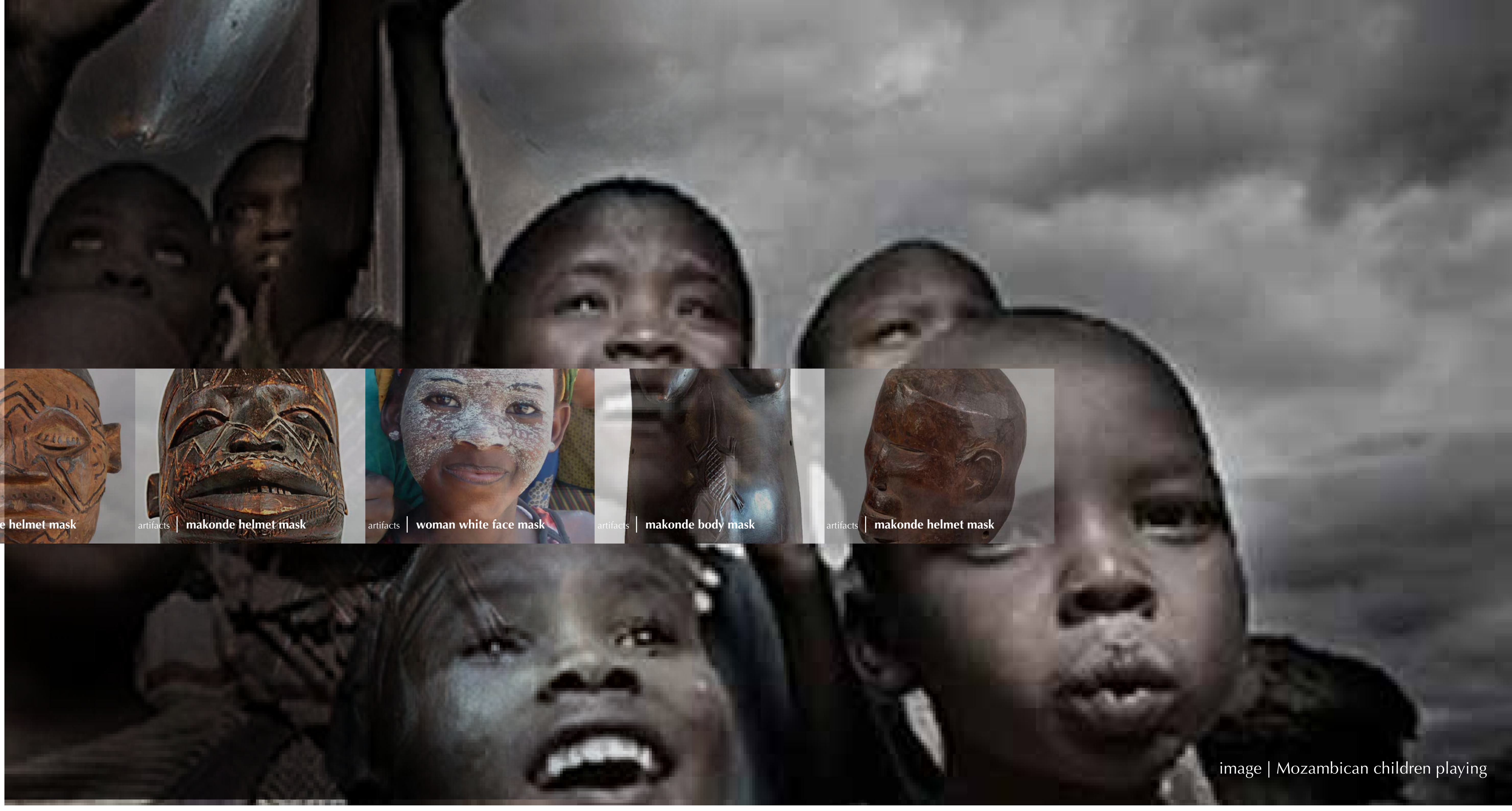


image | Mozambican children playing



artifacts | chokwe mask



artifacts | makonde helmet mask



artifacts | makonde helmet mask



artifacts | woman white face mask



artifacts | makonde body mask



artifacts | makonde helmet mask

Notes On Site

Chivonguene Town, Guija District, Gaza Province, Mozambique

| | |
|-------------------------|---------------|
| Site Dimensions | 35.0m x 60.0m |
| Gross Lot Area | 2100 sm |
| Net Lot Area | 1,980 sm |
| FAR Floor Area Ration | 1.0 |
| Lot Coverage (building) | 50% |
| Buildable Area | 50% |
| Open Space Requirement | 50% |
| Gross Building Area | 310 sm |
| Maximum Building Height | 5 meters |
| Maximum Building Floors | 1 floors |

| | |
|-----------------------------------|---|
| Site Temperature Range | January 24 c / July 26 c |
| Windiest Month | March |
| Average Humidity | |
| Prevailing Winds (Maximum) | South - Southeast |
| Rainfall (Yearly Average) | 400 mm -600 mm per year |
| Sun Angles (Summer/ Winter) | 86.80 summer (December) / 41.49 winter (July) |
| Local Environmental Catastrophies | Windstorms / Floods / Droughts |
| Shadow Length | 1.13m summer/ 0.06m winter |
| Climate | Savanna (Semi-Arid type) |
| Population | 75,303 (2007 Kafountine) |
| Official Language | Portuguese (24%) Mother tongue Bantu - Tsonga |
| Water Bodies | Limpopo River |

Chirrunduo

Guija District

LIMPOPO River

Masjid Guija

CHOKWE



Mualati

Machachan

Funguane

force | **winds** max 44.82km
(storms & droughts)

site | **Learning Center**

force | **water** | waters bring forth bodies

Bambene

force | **light** | 86.80 summer (December 22) / 41.49 winter (July 21)

Salao do Reino das

AMBIANCE | Expansion is a sense of energy that exist as light, wind and water which form potential moments of the Boma (homestead)...

conditions | **aerial image** Guija Dis.



conditions | **Canhveiro** tree (Marula)



conditions | **sugar apple tree**



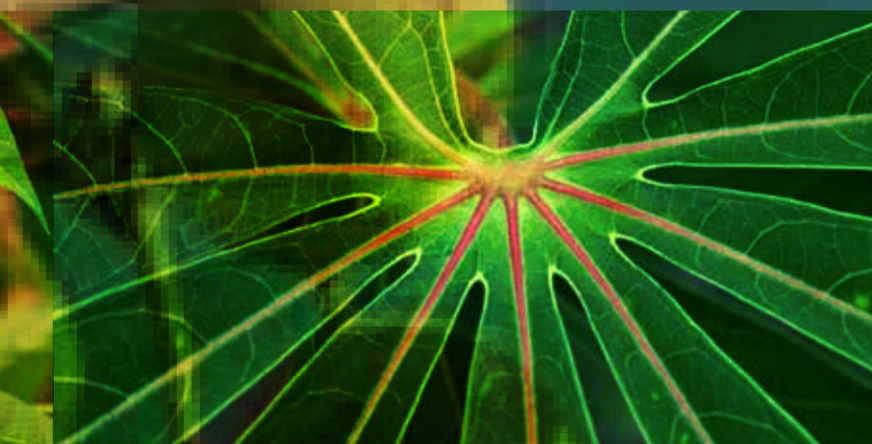
conditions | **cashew tree**



conditions | **mango tree**



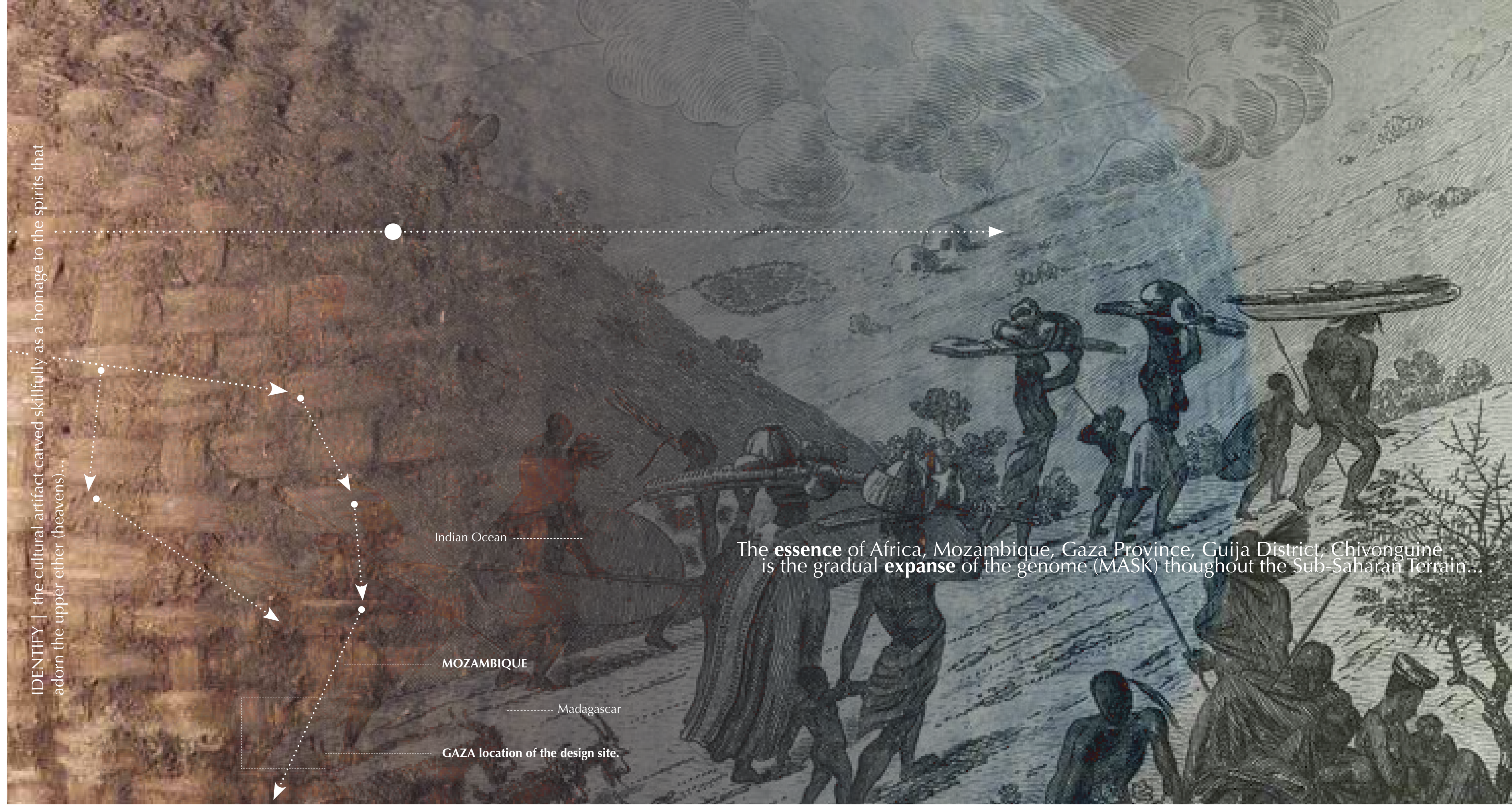
conditions | **cassava tree**



conditions | **cassava tree**



conditions | **marula fruit.**



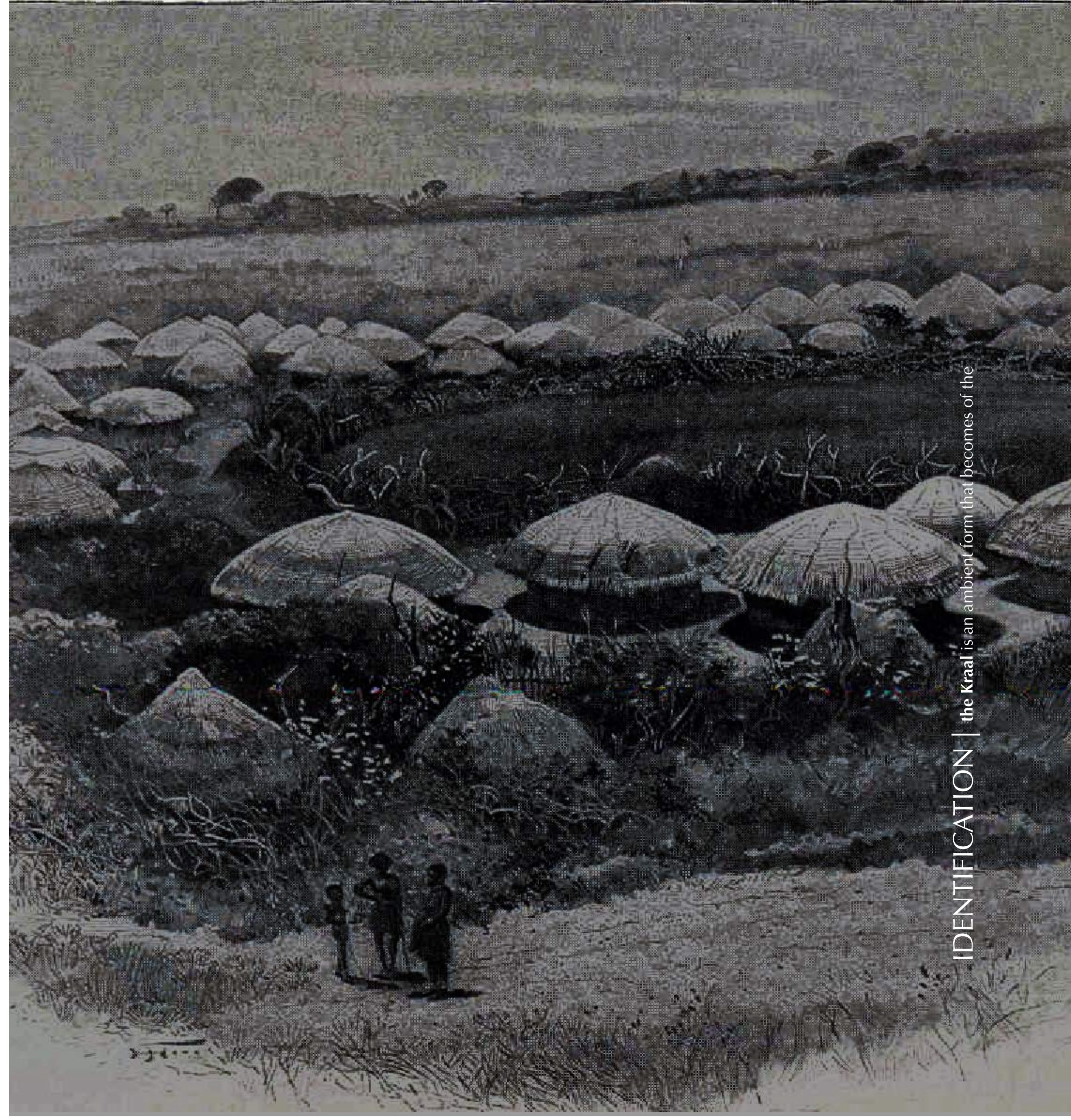
ASSEMBLAGE | The Kraal... A determinant that is a derivative potential. PLACE



IDENTIFY | the Expansion



IDENTITY | Tsonga Globular Pot is the cultural artifact

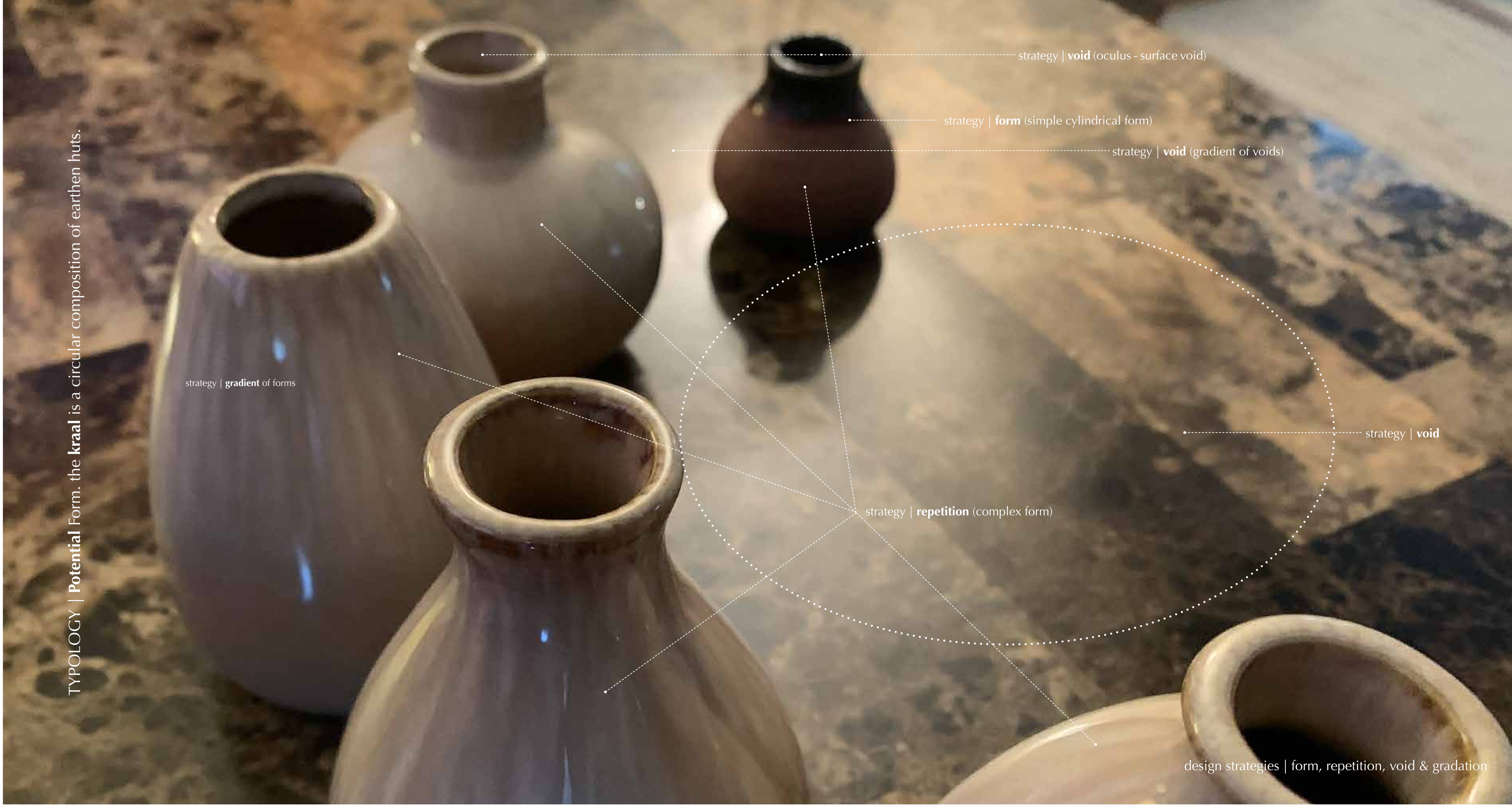


IDENTIFICATION | the Kraal is an ambient form that becomes of the



simple globular form

TYPOLGY | Potential Form. the kraal is a circular composition of earthen huts.



strategy | gradient of forms

strategy | void (oculus - surface void)

strategy | form (simple cylindrical form)

strategy | void (gradient of voids)

strategy | repetition (complex form)

strategy | void

design strategies | form, repetition, void & gradation

strategy | void (gradient of voids)

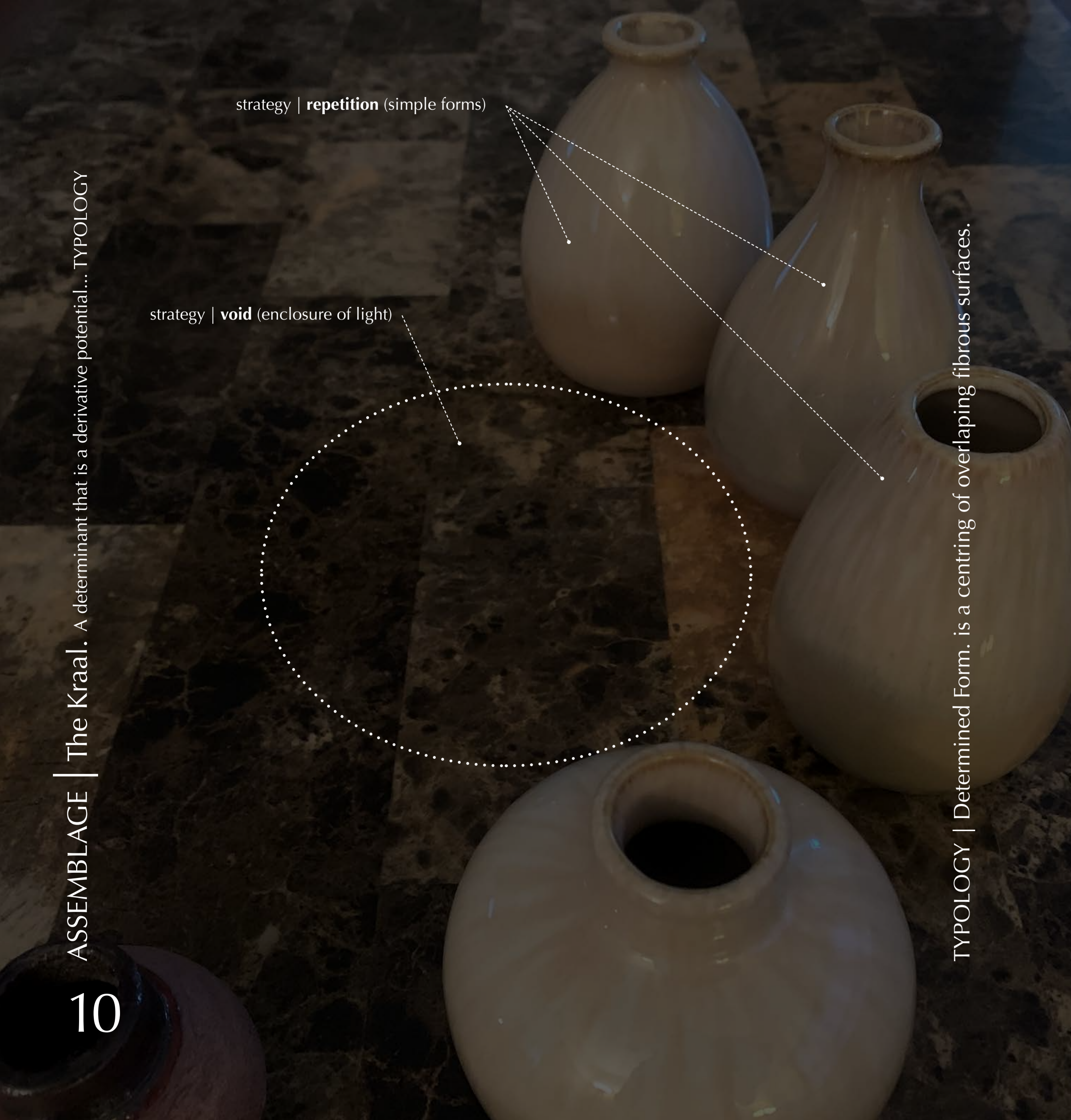
strategy | void (enclosure of light)

TYPOLGY | Ideal Form. is a circular composition of earthen forms.

strategy | void (enclosure of light)

strategy | repetition (simple forms)

strategy | void (gradient of voids)





texturesMATERIAL | the essence of grass



texturesMATERIAL | the essence of adobe is a non-expansive illite that allows for a grainy matte surface.



strategy | void (oculus - surface void)
simple globular form

textures | mud bricks, thatch (dried grass)